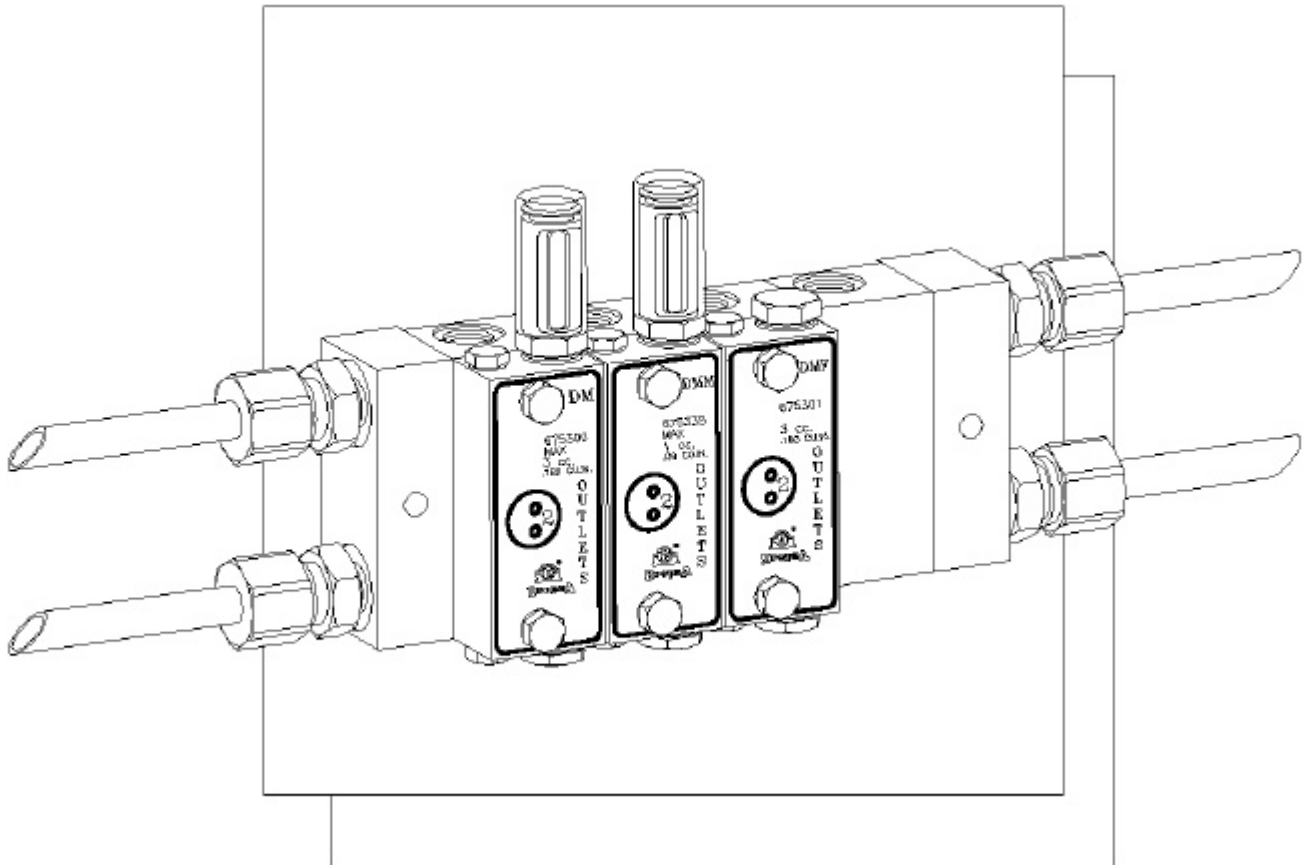




**NEW METERING VALVES  
WITH BASES AND MODULAR VALVES MADE IN ZINC PLATED  
STEEL FOR DUAL AIR-OIL LUBRICATION**

**DUAL-LINE  
AIR-OIL**

**ENGLISH**



The new modular metering valves for dual-line air-oil lubrication offer following benefits:

- Versatile in layout planning.
- Flexibility to expand or reduce the number of elements to meet changing requirements.
- Blanking plate can be provided to accommodate future requirements.
- Cost reduction on labour and piping: the metering valves can be serviced without disturbing the assembly or existing pipe work.
- Lower maintenance costs: the modular concept provides lower cost replacement components.
- Reduced spare parts costs due to the interchange ability of the metering valves and their bases.

**ITALY**

Dropsa SpA  
Via B. Croce ,1 20090  
Vimodrone (Mi)  
Tel: (+39) 02 – 250791  
Fax: (+39) 02 – 25079767  
E-mail: [sales@dropsa.it](mailto:sales@dropsa.it) (Export)  
E-mail: [vendite@dropsa.it](mailto:vendite@dropsa.it) (National)

**U.K.**

Dropsa (UK) Ltd.  
Unit 6, Egham Business Village,  
Egham,  
Surrey TW20 8RB  
Tel: (+44) 01784 – 431177  
Fax: (+44) 01784 – 438598  
E-mail: [salesuk@dropsa.com](mailto:salesuk@dropsa.com)

**GERMANY**

Dropsa GmbH,  
Volmerswerther Strasse 80  
40221 Dusseldorf 1,  
Deutschland  
Tel: (+49) 0211 – 394-011  
Fax: (+49) 0211 – 394-013  
E-mail: [sales@dropsa.de](mailto:sales@dropsa.de)

**U.S.A.**

Dropsa Corporation  
50679 Wing Drive  
Utica,  
Michigan 48315,  
Tel: (+1) 810-566-1540  
Fax: (+1) 810-566-1541  
E-mail: [salesusa@dropsa.com](mailto:salesusa@dropsa.com)

**BRAZIL**

Dropsa – Remonlub  
Rua Sobralia 175  
Santo Amaro,  
Sao Paulo,  
Tel: (+55) 11 56310007  
Fax: (+55) 11 56319408  
E-mail: [salesbr@dropsa.com](mailto:salesbr@dropsa.com)

© Copyright Dropsa – all rights reserved. Reproduction of any part of this document is strictly forbidden without prior consent from Dropsa. Dropsa reserve the right to withdraw or modify specifications without prior notice.

**DESCRIPTION**

The new modular metering valves for dual-line air-oil system consist of two main parts:

Base and metering valve.

Base and metering valves are made of zinc-plated steel and are available with inlets and outlets in UNI-ISO 7/1 (BSP).

The valves can be supplied with adjustable or fixed discharge.

A blanking plate (part-No. 675305 to be ordered separately) can be provided on the base, instead of the metering valve, to accommodate future additional points.

**MODULAR METERING VALVES**

Body in zinc-plated steel, lapped holes, tempered and ground pistons to provide tightness without gaskets.

All pieces are galvanized.

The valves with adjustable discharge are equipped with a turret fitted with adjusting screw and counter-screw.

**SPECIFICATION**

Temperature range: -30°C to + 80°C (-22°F +176°F)

Frequency: 100 cycles/min.

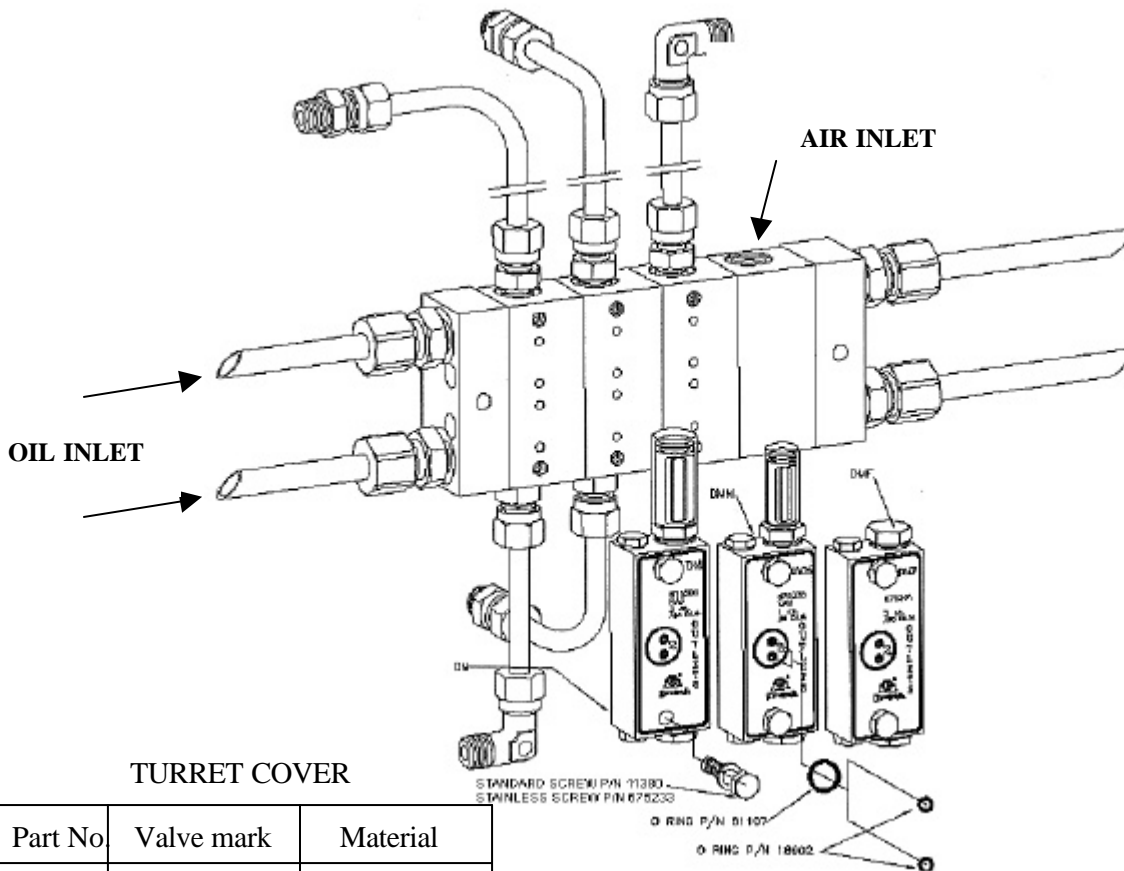
Max pressure inlet: 400 bar (5800 psi)

Air pressure: 1.5 ÷ 3 bar

Oil min. viscosity: 15 cSt

Oil max. viscosity: 460 cSt

Adjustable discharge		Code	Mark
cm <sup>3</sup>	cu.in.		
0.1 ÷ 1	.0061 ÷ .061	675335	DMM
0.25 ÷ 3	.0153 ÷ .183	675300	DM
Fixed discharge			
1	.061	675385	DMMF
3	.183	675301	DMF
Blanking plate		675305	BP
0.25 ÷ 3	.0153 ÷ .183	675690	See Note 1



TURRET COVER

Part No	Valve mark	Material
622210	DMM	Aluminium**
671028	DM	Metacrilycate*

\*\* Transparent cap in metacrilycate on request.

\* Aluminium cap on request.

Note 1:  
Nickel plated metering valves, with stainless steel plugs and screws.

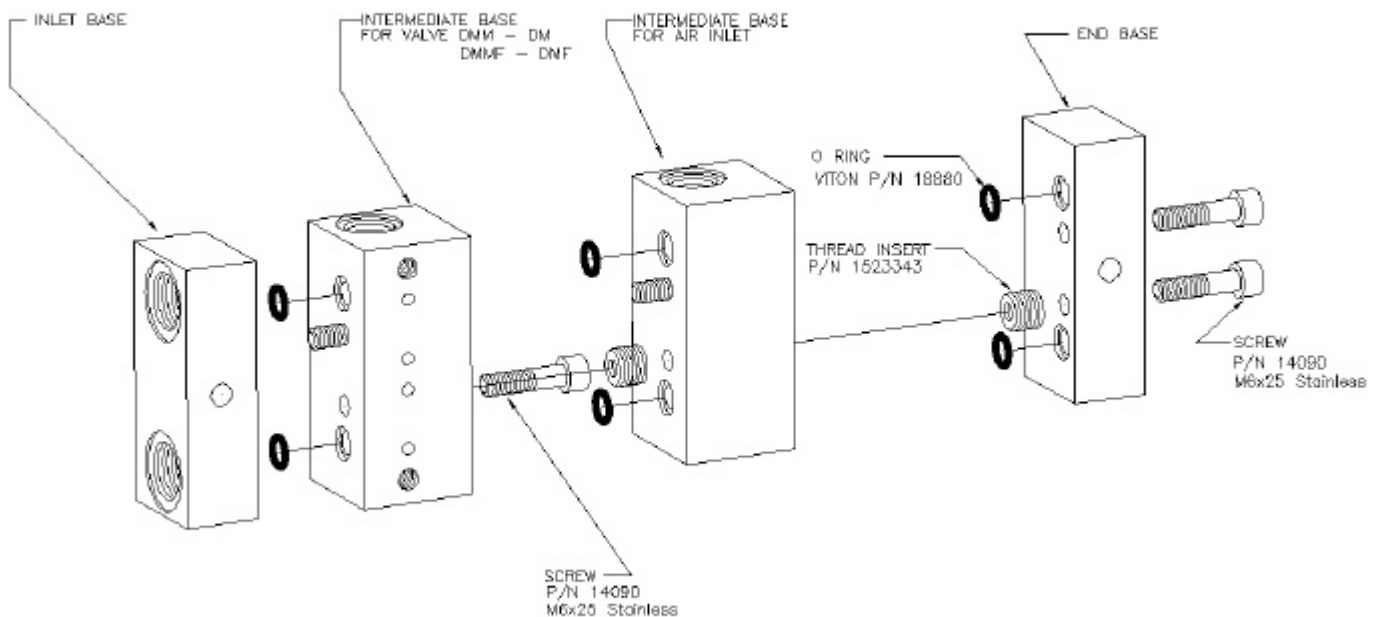
## MODULAR BASES

The base is made up of a minimum of four elements:

- Inlet base (1)
- Intermediate base (1 for each metering element)
- Intermediate base for air-inlet (1)
- End base (1)

This concept can be extended to include up to an unlimited number of sections in a common assembly by simply interposing the necessary intermediate bases between the inlet base and intermediate base for air inlet. Each element is made of galvanized zinc plated white steel.

BASE	UNI-ISO	UNI-ISO
Inlet base	675311	675693
Intermediate base for valves DMM - DM DMMF - DMF	675392	675692
Intermediate base for air inlet	675391	675691
End base	675313	675694



- ◆ THE BASES ARE COMPLETED WITH ASSEMBLING SCREW AND O-RINGS PLACED BETWEEN ONE BASE AND THE NEXT ONE
- ◆ TO INSTALL THE VALVE ASSEMBLY ONTO THE MACHINE, YOU WASHER (PART No. 16009) AND SCREW (PART No. 12706) MUST BE ORDER SEPARATELY

### HOW TO ORDER A METERING ELEMENTS ASSEMBLY

Specify the thread, the number of metering elements and the mark of each metering valve by reading the assembly from left to right..

NOTE: if the valve assembly is the last on the machine's line you will have to order two plugs code 926002 (UNI-ISO) to close the holes of the end base.

### CAUTION

Valves are normally delivered two outlets.

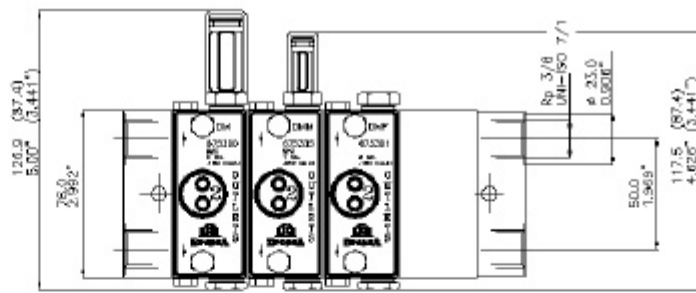
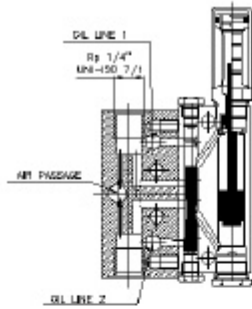
To use them for one outlet only proceed as follows:

- Unscrew the two fixing screw which lock the metering element to the base.
- Remove the two O-rings part-no. 18902 which are fitted inside the O-ring part-no. 61107.
- Reassemble the metering element to the base, turning the label to arrangement the single outlet.

### SPARE PARTS KIT

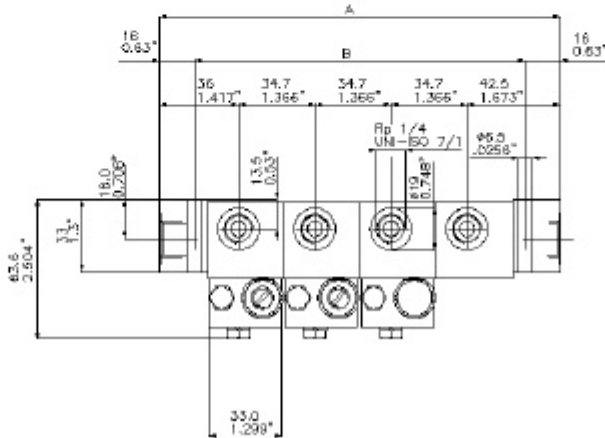
Spare part kits, including adjusting turret and O-rings for connection to the base, are available on request.

PART NUMBER FOR SPARE PARTS KITS	
VALVE TYPE	KIT PART No
ADJUSTABLE DISCHARGE	
DMM	675340
DM	675341
FIXED DISCHARGE	
DMMF	675344
DMF	675344



Dimensions of fixed discharge valves (without turret) are shown in brackets

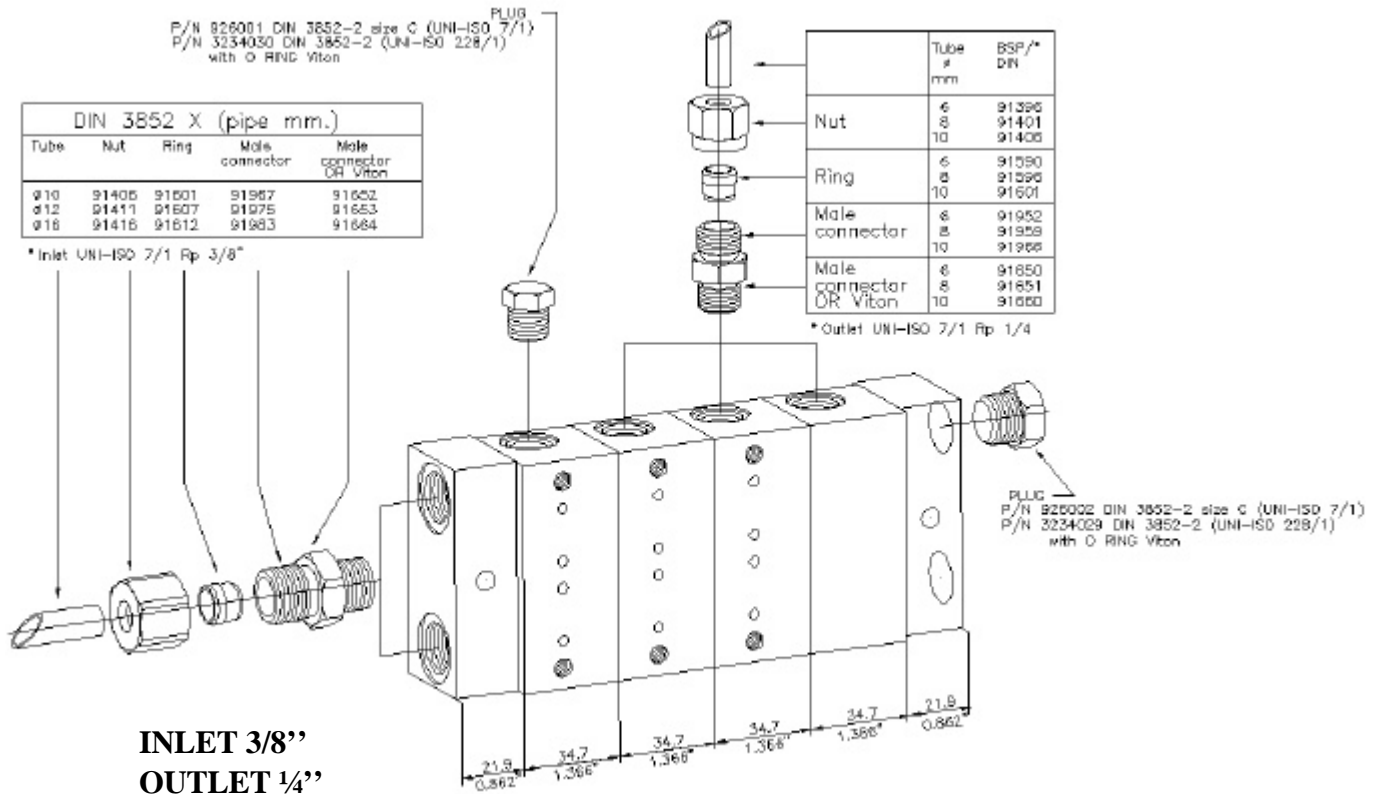
Dimensions A is obtained by adding to the inlet, the intermediate for air and end bases (78.5 mm – 3.091 in.) 34.7mm (1.366 in.) for each intermediate base.



P/N 926001 DIN 3852-2 size C (UNI-ISO 7/1)  
P/N 3234030 DIN 3852-2 (UNI-ISO 228/1)  
with O RING Viton

DIN 3852 X (pipe mm.)				
Tube	Nut	Ring	Male connector	Male connector OR Viton
ø10	91405	91601	91967	91602
ø12	91411	91607	91975	91653
ø16	91415	91612	91983	91664

\* Inlet UNI-ISO 7/1 Rp 3/8"



**INLET 3/8"**  
**OUTLET 1/4"**