



CHARACTERISTICS

- ONE OR TWO PUMP MODULES
- MINIMUM LEVEL CAPACITANCE SWITCH AND VISUAL MAXIMUM LEVEL AS STANDARD
- "QUICK SWAP" PUMP MODULE: EASY OUTPUTS SUBSTITUTION WITHOUT DISRUPTION TO PIPE-WORK DURING PUMP MAINTENANCE
- COMPATIBLE WITH:
 - 02 SYSTEM
 - 26 SYSTEM
- RESERVOIR CAPACITY: 10 KG, 30 KG
- FLOW:
 - 25cm³/MIN (1,52 CU.INCH/MIN) (WITH 1 PUMP MODULE)
 - 50cm³/MIN (3,05 CU.INCH/MIN) (WITH 2 PUMP MODULES)
- WORKING TEMPERATURE: -5°C TO +50 °C
- WITH HEAT MODULE

A COMPACT GREASE PUMP PACKAGE THAT MAINTAINS THE FEATURES, PROVEN RELIABILITY AND ACCESSORY RANGE OF THE SUMO PUMP SERIES

The mini-SUMO Pump is ideal for those applications that use Series 26 - progressive system and 02 Dual Line System. It is designed to feed oil and grease lubrication systems and is compatible with greases up to grade NLGI-2.

Up to each pump modules providing 25cc/min can be installed in tandem configuration with a generous 380bar (5511psi) pressure.

When fitted with two pump modules, the pump continues to deliver grease at maximum pressure even if one pump module becomes ineffective. Pump integrity and function can therefore be maintained until a new pump module can be quickly installed, without the need to disrupt any tubing.

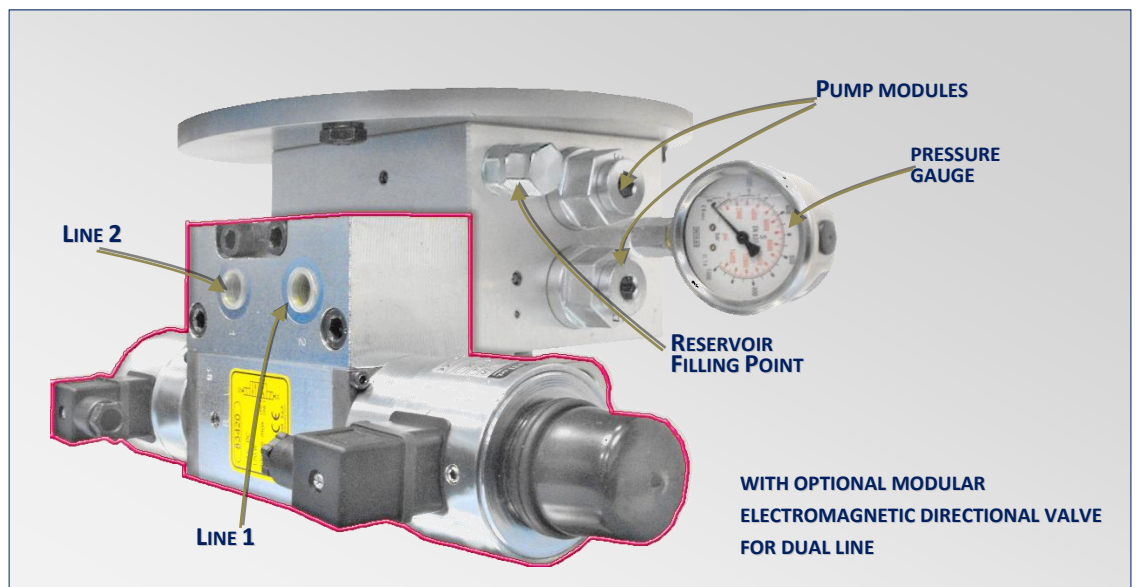
ZERO DOWNTIME DURING PUMP MAINTENANCE

The QUICKSWAP SYSTEM allows to quickly replacement of the PUMP MODULES simply by removing and replacing with new ones. No pipe work needs to be disrupted and this means lower possibility of contamination.

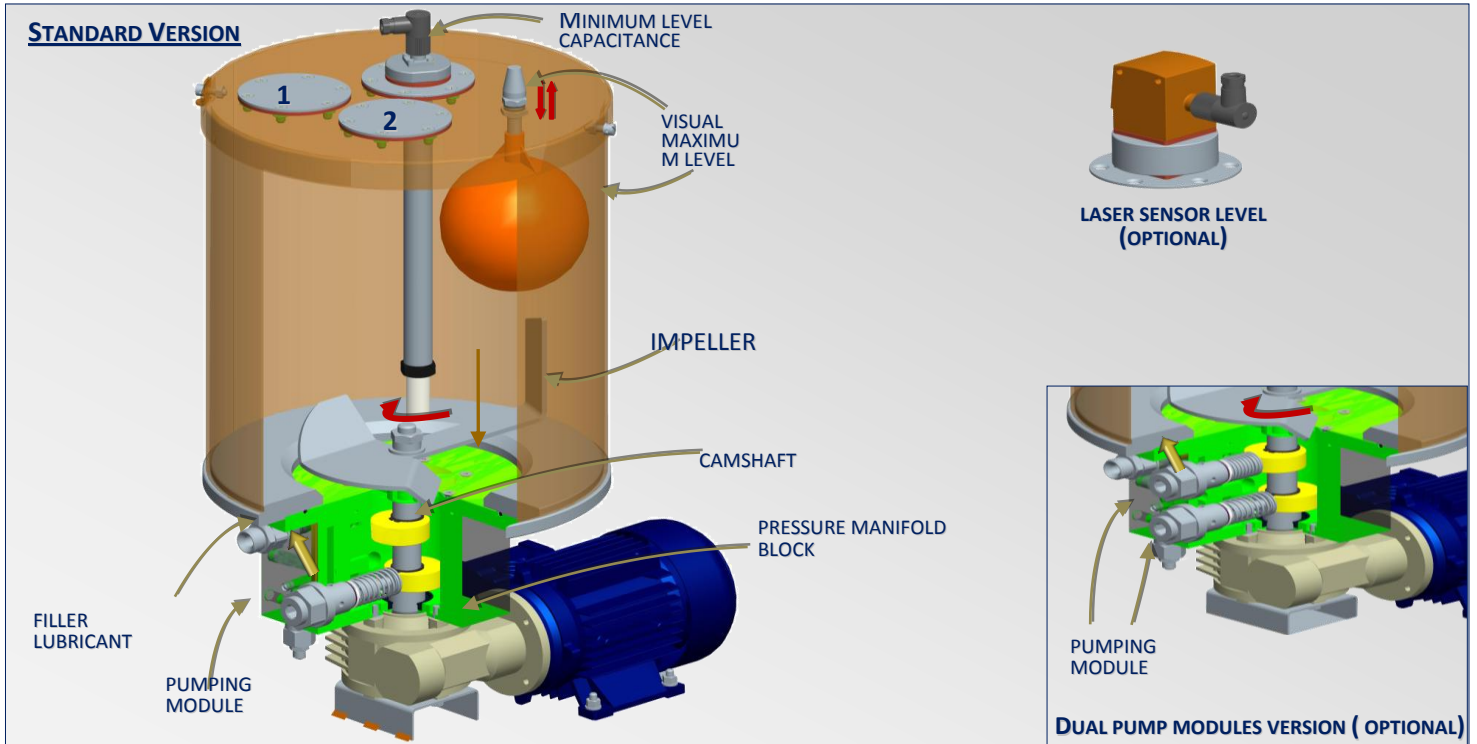


APPLICATIONS

- HEAVY DUTY APPLICATIONS
- PULP & PAPER
- STEEL INDUSTRY
- LIGHT INDUSTRY
- LARGE MACHINE TOOLS



OPERATING PRINCIPLE



THE LUBRICANT IS FED DIRECTLY INTO THE CAM OPERATED PUMP MODULES VIA THE PRESSURE MANIFOLD BLOCK

THE CAMSHAFT ROTATION CREATES AN ALTERNATE PISTON MOTION, ALLOWING GREASE TO BE DRAWN INTO THE PUMP ELEMENT AND PUMPED UNDER PRESSURE TOWARDS THE OUTLET.

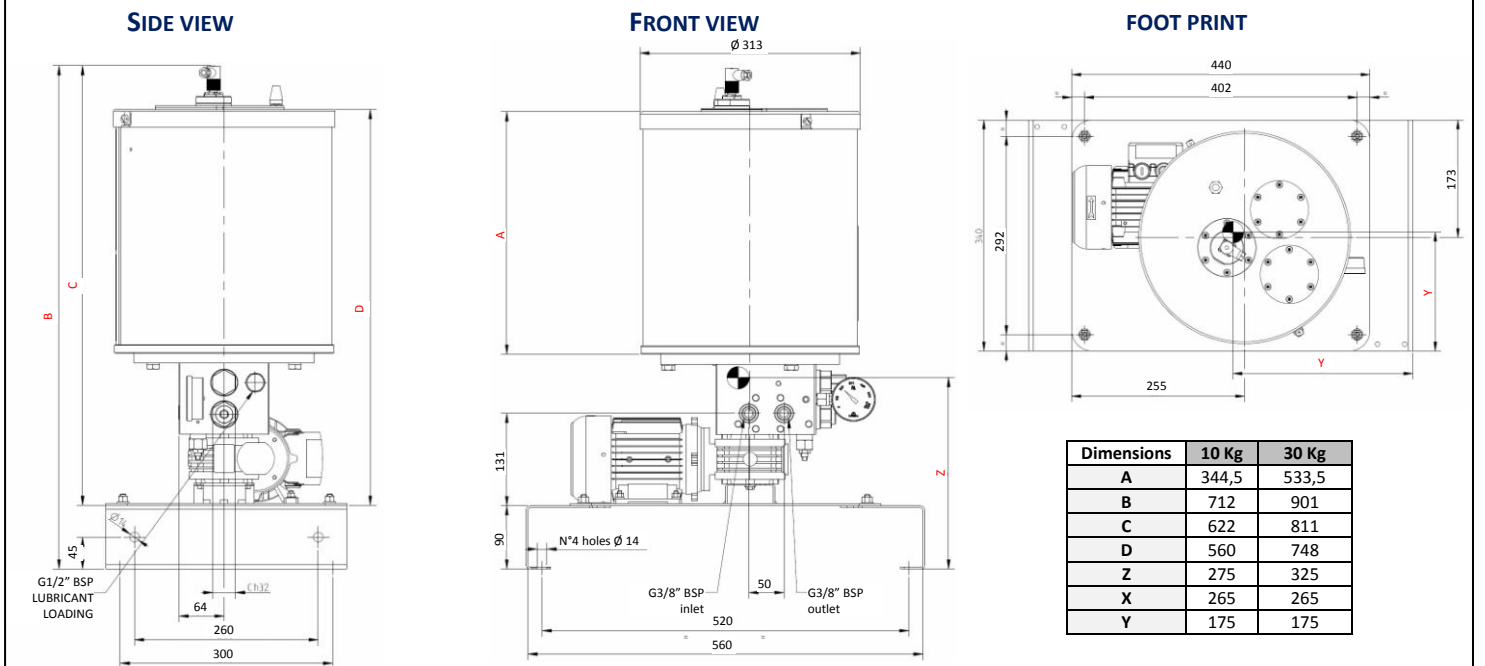
THE PUMP ELEMENT HAS A SPRING RETURN THAT ALLOWS THE PUMP MODULE TO RETURN TO ITS STARTING POSITION AND REPEAT THE PUMP CYCLE.

THE GREASE STIRRING PADDLE, LINKED TO THE CAMSHAFT, KEEPS THE GREASE FREE OF AIR POCKETS AND AVOIDS IT CLINGING TO THE SIDE OF THE RESERVOIR.

THE RESERVOIR HAS A MAXIMUM VISUAL LEVEL SENSOR LOCATED ON THE TOP PLATE.

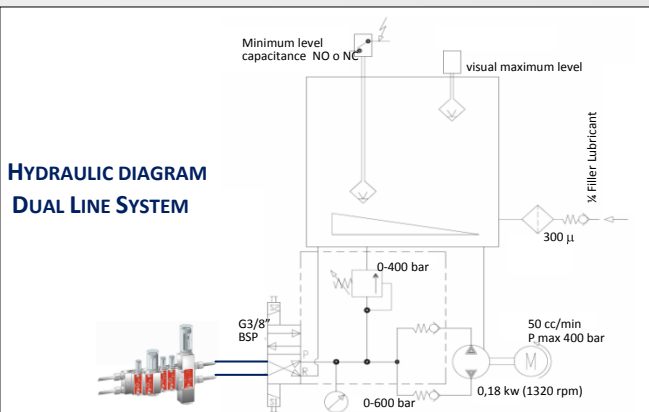
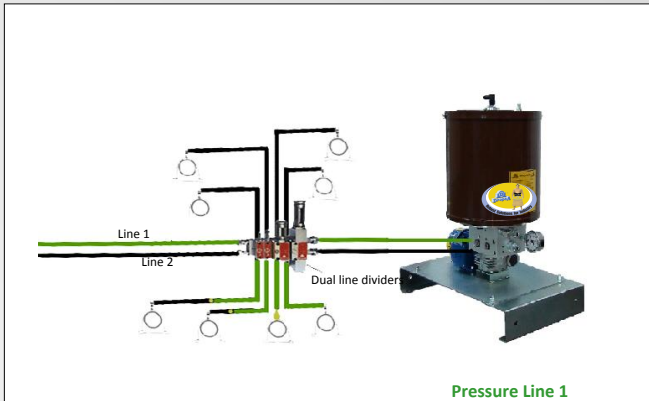
THE LUBRICANT - OIL (32 ÷ 1000 CST), OR GREASE (000 ÷ 2 NLGI), IS INTRODUCED INSIDE THE RESERVOIR THROUGH THE REFILL POINT THAT IS EQUIPPED WITH A REFILL FILTER.

OVERALL DIMENSIONS (DRAWING NOT TO SCALE)

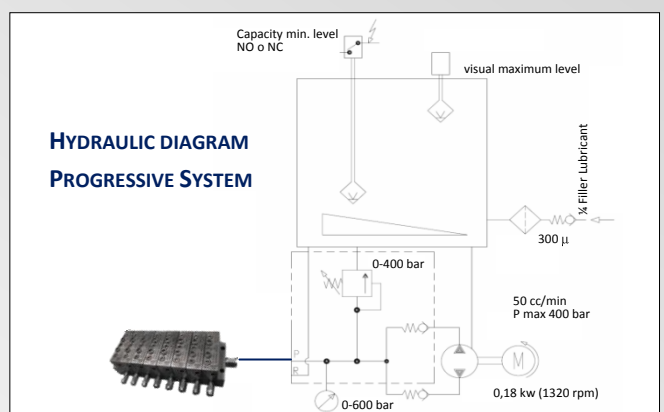
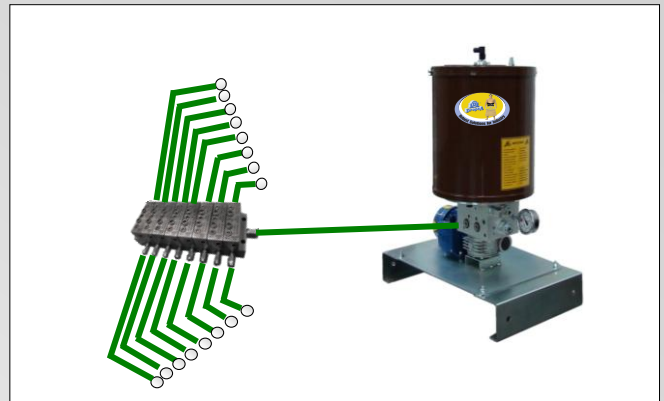


LUBRICATION SYSTEM EXAMPLES

- LUBRICATION SYSTEMS USED ON LARGE SCALE MACHINERY TO LUBRICATE MULTIPLE POINTS ON LARGE MACHINES. THE SYSTEM LENGTH CAN EXCEED 60 METERS AND THE PRESSURE UP TO 400BAR (5511PSI) - DUAL LINE SYSTEM



- TOTAL LOSS LUBRICATION OIL OR GREASE PROGRESSIVE SYSTEM. - 26 SYSTEM



TECHNICAL INFORMATION

<i>TECHNICAL CHARACTERISTICS</i>	
Electric Motor	3PH: 0,18 Kw (50 Hz) - 0,20 Kw (60 Hz) 230 - 276 V; 400 - 480 V 50 Hz (1400 rpm) - 60 Hz (1680 rpm) 1PH: 110 V 50 Hz (1370 rpm) 230 V 50 Hz (1370 rpm) 24 V DC 2800 rpm
Pumping system	Piston plunger type
Max working pressure	380 bar
Reservoir capacity	10 L (2,6 USA Gal) or 30 L (7,9 USA Gal)
Flow	25 cm ³ /min (1,52 cu.inch/min) one pump module 50 cm ³ /min (3,05 cu.inch/min) two pump modules
Return Port	G 3/8" BSP
Outlet Port	G 3/8" BSP
Refil Point	G 1/2" BSP
Working temperature	-5 ÷ + 50°C
Lubricants allowed	Mineral oil 32÷1000 cSt/ Grease NLGI2



ORDERING INFORMATION

CONTACTS

www.dropsa.com

sales@dropsa.com

ITALIA

Dropsa SpA
t. +39 02-250791
f.+39 02-25079767

U.K.

Dropsa (UK) Ltd
t. +44 (0)1784-431177
f. +44 (0)1784-438598

GERMANY

Dropsa GmbH
t. +49 (0)211-394-011
f. +49 (0)211-394-013

FRANCE

Dropsa Ame
t. +33 (0)1-3993-0033
f. +33 (0)1-3986-2636

CHINA

Dropsa Lubrication
Systems
(Shanghai) Co., Ltd
t. +86 (021) 67740275
f. +86 (021) 67740205

U.S.A.

Dropsa Corporation
t. +1 586-566-1540
f. +1 586-566-1541

AUSTRALIA

Dropsa Australia Ltd.
t. +61 (02)-9938-6644
f. +61 (0)2-9938-6611

BRAZIL

Dropsa do Brasil Ind. e
Com. Ltda
t. +55 (0)11-563-10007
f. +55 (0)11-563-19408

AVAILABLE VERSION					
PRODUCT	SETTING PRESSURE	FLOW	RESERVOIR	MOTOR	PART NUMBER
Mini-Sumo GREASE	300 Bar (5511psi)	25 cm ³ /min	10 kg	3 Ph - 0,18 Kw - 230/480 V	2487000
				1 Ph - 0,18 Kw - 110 V	2487010
				1 Ph - 0,18 Kw - 230 V	2487011
				24 V DC	2487012
			30 Kg	3 Ph - 0,18 Kw - 230/480 V	2487001
				1 Ph - 0,18 Kw - 110 V	2487013
				1 Ph - 0,18 Kw - 230 V	2487014
				24 V DC	2487015
Mini-Sumo OIL	300 Bar (5511psi)	25 cm ³ /min	10 kg	3 Ph - 0,18 Kw - 230/480 V	2487050
				1 Ph - 0,18 Kw - 110 V	2487060
				1 Ph - 0,18 Kw - 230 V	2487061
				24 V DC	2487062
			30 Kg	3 Ph - 0,18 Kw - 230/480 V	2487051
				1 Ph - 0,18 Kw - 110 V	2487063
				1 Ph - 0,18 Kw - 230 V	2487064
				24 V DC	2487065

OPTIONAL		
PRODUCT	DESCRIPTION	PART NUMBER
Hydraulic change-over	Without cycle sensor	0083950
	With cycle sensor	0083951
Electro-magnetic Inverter KIT	24 V DC	0083490
	110 V AC 50/60 Hz	0083491
	230 V AC 50/60 Hz	0083492
	380 V AC 50/60 Hz	0083493
	24 V DC	0083494
Electro-pneumatic inverter KIT	24 V AC	0083495
	110 V AC 50/60 Hz	0083496
	230 V AC 50/60 Hz	0083497
	Laser Sensor Assembly 30 Kg	0295130
Laser Level	Laser Sensor Assembly 10 Kg	0295179
	Heater module	For low temperature < -5°C (23° F)
Pumping module	Pump module 25cc/min	0297010
Oil Conversion	Min/Max Level Kit floating oil 10 Kg (66lb) + Filler plug with filter	0295151+3130138
	Min/Max Level Kit floating oil 30 Kg (66lb) + Filler plug with filter	0295150+3130138
Bracket for terminal board	Assembling on metal pallet	0297033

SPARE PARTS		
PRODUCT	DESCRIPTION	PARTNUMBER
Motor	3 Ph - 0,18 Kw - 230/480 V - 50-60 hz	0297001
	1Ph - 0,18 Kw - 110 V - 50 - 60 hz	3301558
	1Ph - 0,18 Kw - 230 V - 50 - 60 hz	3301559
	24 V - CC	3301557
Level Switch Kit	Min Capacitance Level (24 V cc) 10 Kg (grease)	0297200
	Min Capacitance Level (24 V cc) 30 Kg (grease)	0295120
	Min Capacitance Level (250 V ca) 10 Kg (grease)	0295123
	Min Capacitance Level (250 V ca) 30 Kg (grease)	0295121
	Max Capacitance Level 10 e 30 Kg (grease)	0295170
	Max. Mechanical Level 10 e 30 Kg (grease)	0295100
Filter	Grease filler	0297007
Valve	By-pass	0234496
Gasket	Body pump-reservoir	3190485
Pressure gauge	0 - 600 Bar	3292167
Pumping		0297010C