

CHARACTERISTICS

- **3 PUMP MODELS:**
 - 1 -12 PUMP ELEMENTS
 - 1 -24 PUMP ELEMENTS
 - 1 -35 PUMP ELEMENTS
- **12V AND 24V VERSIONS**
- **12 TIMER SETTINGS**
- **6 DIFFERENT PUMP ELEMENT SIZES**
- **PUMP –TO–POINT CONCEPT IS EASY TO ENGINEER**
- **EASY TO INSTALL**
- **2 LITERS RESERVOIR**
- **AUTOMOTIVE NRUN VERSION WITH REMOTE ENABLE FOR COMPATIBLE CHASSIS INSTALLATIONS**

APPLICATIONS

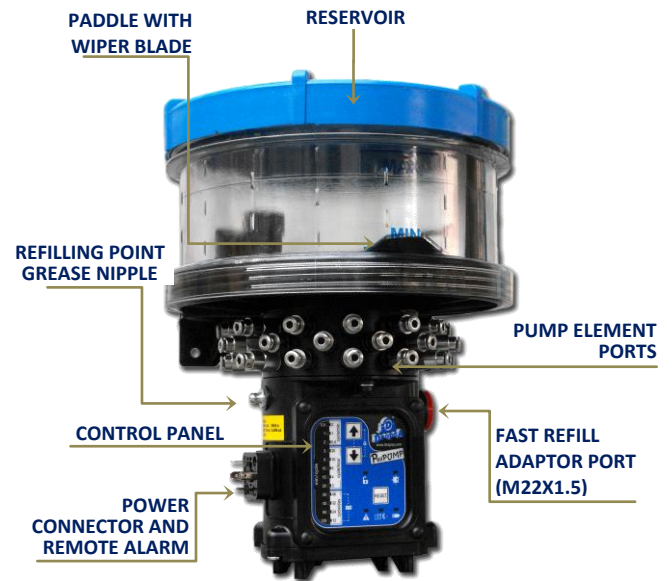
- **VEHICLE AND CHASSIS LUBRICATION**
- **SMALL-MEDIUM MACHINE TOOLS**
- **ANY TYPE OF DEVICE OR MACHINERY THAT REQUIRES GREASE LUBRICATION FROM 1 TO 35 LUBRICATION POINTS**

THE COMPACT MULTI-OUTLET GREASE PUMP

The electrically driven **PoliPUMP** is the quick, simply and cost effect solution for lubricating up to 35 grease points without the need to design complex lubrication systems.

In just a few quick steps you can design and install an automatic centralized lubrication system for up to 35 lube points without any specialized engineering skills.

No external metering valves, cycle sensors are required. Just plug and pipe it in and you are ready to go.

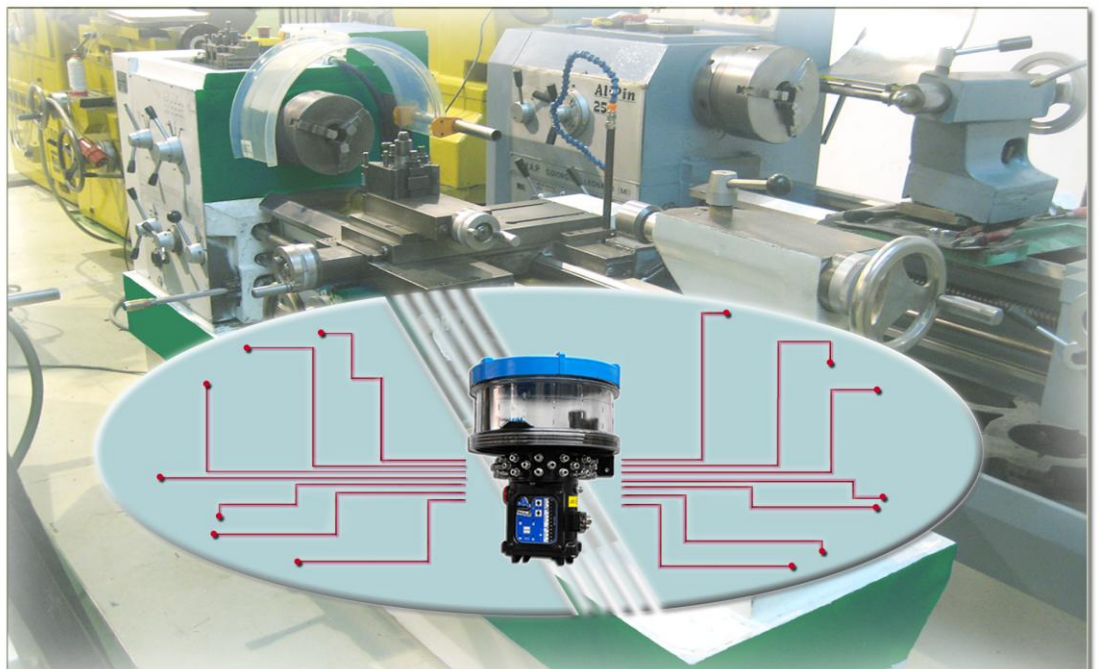


**SUPPLY UP TO 35 GREASE POINTS WITH ONE PUMP.
NO COMPLEX METERING VALVES OR SYSTEM DESIGN IS NECESSARY**

CAN BE USED STRAIGHT OUT OF THE BOX IN JUST A FEW QUICK STEPS:

- Choose from a range of 6 different Pump Elements for each lubrication point;
- Screw the Pump elements into the Outlet Manifold block;
- Quickly connect the pump elements to the points with flexible tubing – thanks to push-in fitting on the pump element;
- Power up the unit and select one of the 12 timer settings.

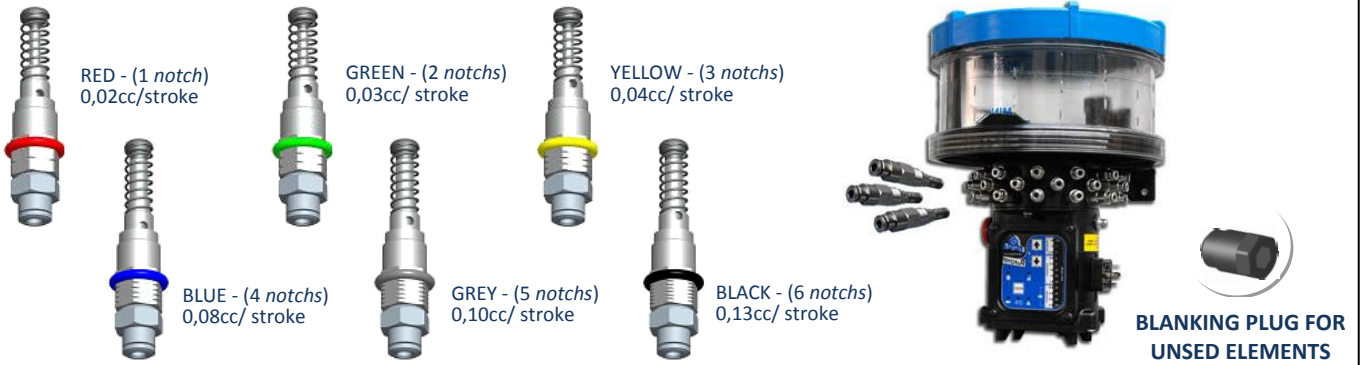
APPLICATION EXAMPLE



GET UP AND RUNNING IN A FEW SIMPLE STEPS:

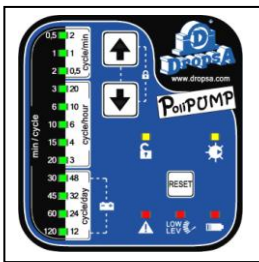
1. PICK NUMBER AND TYPE OF YOUR PUMPING ELEMENTS

Pumping elements are installed sequentially around the cylindrical outlet manifold...



...There are 6 different pump element sizes for you to select from and they are ordered separately from the pump according to how many lubrication points need to be serviced.

2. SELECT THE LUBRICATION CYCLE TIMER YOU WANT:



Once the pump has been powered on simply used the up and down buttons to selected the designed Lubrication Cycle.

There are 12 different cycle times that can be selected:

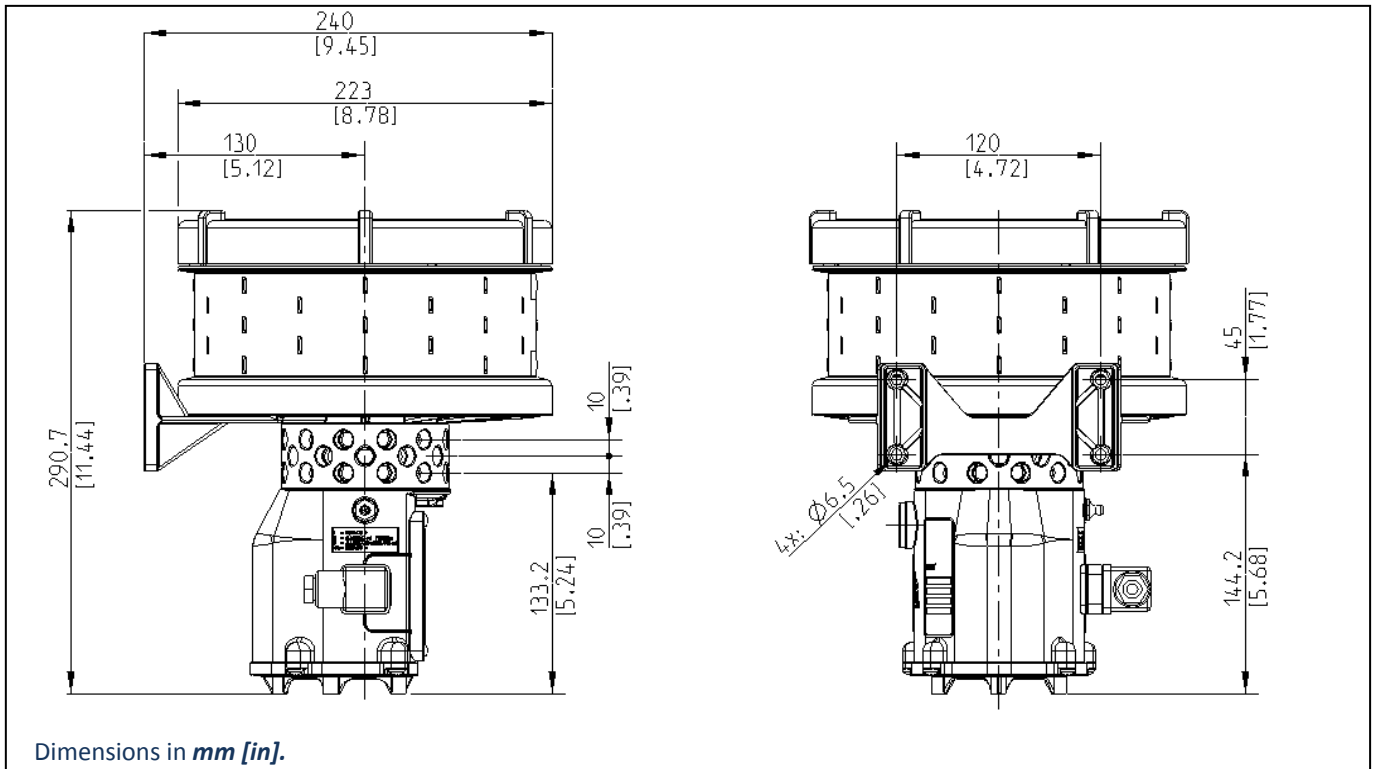
The cycle frequency available are:

- Cycles per minute: 0.5 – 1 – 2
- Cycles per hour: 3 – 4 – 6 – 10 – 20
- Cycles per day: 12 – 24 – 32 – 48

READY TO GO



DIMENSIONS (NOT TO SCALE)



GENERAL TECHNICAL CHARACTERISTICS	
Pumping system	Single acting pump elements with cam activation
Drive assembly	DC motor with gearbox
Motor operating voltage	12V DC 24V DC
Electronic protection threshold for motor overload	0.6 A
Nett weight	1Kg (2.2lb)
Number of outlets / pumping max.	12 – 24 – 35
Output connection (pumping outlet)	Push-in Ø4
Nominal output per pump element	0,02cc/strokes – RED (1 notch) 0,03 cc/ strokes – GREEN (2 notchs) 0,04 cc/ strokes – YELLOW (3 notchs) 0,08 cc/ strokes – BLUE (4 notchs) 0,10 cc/ strokes – GREY (5 notchs) 0,13 cc/ strokes – BLACK (6 notchs)
Max pressure achievable at the outlet of the pumping	80 bar
Reservoir Capacity	Standard 2 litres (0.53 gallons)
Grease capability	NLGI00 ÷ NLGI2
Operating temperature	-10°C ÷ +60°C (14°F ÷ 140°F)
Storage temperature	-20°C ÷ +80°C (77°F ÷ 176°F)
Humidity	90%
Noise	< 70 db (A)
Minimum level signalling/counting revolution	with hall sensor
CONTROL PANEL CHARACTERISTICS	
Working voltages	12VDC – 24VDC
Operating temperature	-10°C ÷ +60°C (14°F ÷ 140°F)
Storage temperature	-20°C ÷ +80°C (77°F ÷ 176°F)
Hardware characteristics	<ul style="list-style-type: none"> Motor Overload protection Input power protection Remote Alarm signal Completed Cycle control sensor
Relay alarm contact	NO (in alarm) – I max 5A - Vmax 250V – Pmax 60W



POLIPUMP DESIGN WORKSHEET

1. SELECT THE PUMP – Pick a model:

Standard PoliPUMP (includes external alarm relay connection)	12VDC	FROM 1 TO 12 PUMPINGS	0888270	<input type="radio"/>	_____
		FROM 1 TO 24 PUMPINGS	0888271	<input type="radio"/>	_____
		FROM 1 TO 35 PUMPINGS	0888272	<input type="radio"/>	_____
	24VDC	FROM 1 TO 12 PUMPINGS	0888273	<input type="radio"/>	_____
		FROM 1 TO 24 PUMPINGS	0888274	<input type="radio"/>	_____
		FROM 1 TO 35 PUMPINGS	0888275	<input type="radio"/>	_____
Automotive version with NRUN function	12VDC	FROM 1 TO 12 PUMPINGS	0888276	<input type="radio"/>	_____
		FROM 1 TO 24 PUMPINGS	0888277	<input type="radio"/>	_____
		FROM 1 TO 35 PUMPINGS	0888278	<input type="radio"/>	_____
	24VDC	FROM 1 TO 12 PUMPINGS	0888279	<input type="radio"/>	_____
		FROM 1 TO 24 PUMPINGS	0888280	<input type="radio"/>	_____
		FROM 1 TO 35 PUMPINGS	0888281	<input type="radio"/>	_____

2. HOW MANY PUMP ELEMENTS DO YOU NEED?

PUMP ELEMENTS	Q.TY
0,02cc/ stroke RED - (1 notch) 0888451	<input type="radio"/> _____
0,03cc/ stroke GREEN- (2 notchs) 0888452	<input type="radio"/> _____
0,04cc/ stroke YELLOW- (3 notchs) 0888453	<input type="radio"/> _____
0,08cc/ stroke BLUE- (4 notchs) 0888454	<input type="radio"/> _____
0,10cc/ stroke GREY- (5 notchs) 0888455	<input type="radio"/> _____
0,13cc/ stroke BLACK- (6 notchs) 0888456	<input type="radio"/> _____
SPARE BLANKING PLUG 0888257	<input type="radio"/> _____
TOTAL	_____

3. TUBES AND FITTINGS?

TUBES Ø4	Q.TY
Ø4x2 Nylon tube 5717218	<input type="radio"/> Meters: _____
FITTINGS Ø4	
Push-in H.P. 1/8" BSP straight (max 150 bar) 3084577	<input type="radio"/> _____
Compression fitting 1/8" BSP 0092069	<input type="radio"/> _____
Push-in L.P. 1/8" NPT straight (max 20 bar) 3084586	<input type="radio"/> _____
Push-in H.P. 1/8" BSP 90° 3084696	<input type="radio"/> _____
Push-in H.P. 1/8" NPT 90° 3084620	<input type="radio"/> _____
TOTAL	_____

4. FILL THE PUMP

Rapid Fill Cartridge Kit (recommended) 0888038	<input type="radio"/> _____
Grease cartridge filling kit with valves 3133723	<input type="radio"/> _____
Grease (Multipurpose grade 2) 400 cc cartridge 1524952	<input type="radio"/> _____
TOTAL	_____

Notes/Contact Details:

sales@dropsa.com
www.dropsa.com

ITALIA
Dropsa SpA
t. +39 02-250791
f. +39 02-25079767
U.S.A.
Dropsa Corporation
t. +1 586-566-1540
f. +1 586-566-1541

U.K.
Dropsa (UK) Ltd
t. +44 (0)1784-431177
f. +44 (0)1784-438598
AUSTRALIA
Dropsa Australia Ltd.
t. +61 (02)-9938-6644
f. +61 (02)-9938-6611

GERMANY
Dropsa GmbH
t. +49 (0)211-394-011
f. +49 (0)211-394-013
BRAZIL
Dropsa Brasil Ind.e Com.Ltda
t. +55 (0)11-563-10007
f. +55 (0)11-563-19408

FRANCE
Dropsa Ame
t. +33 (0)1-3993-0033
f. +33 (0)1-3986-2636
CHINA
Dropsa Lubrication Systems (Shanghai) Co., Ltd
t. +86 (021) 67740275
f. +86 (021) 67740205