

CHARACTERISTICS

- **MODULAR BASE:**
QUICK AND EASY
REPLACEMENT OF THE VALVE
- **BSP AND NPT BASES:**
WORK WITH ALL VALVE
MODULES
- **WORKING PRESSURE:**
60÷300 BAR
870÷5431PSI

ADVANTAGES

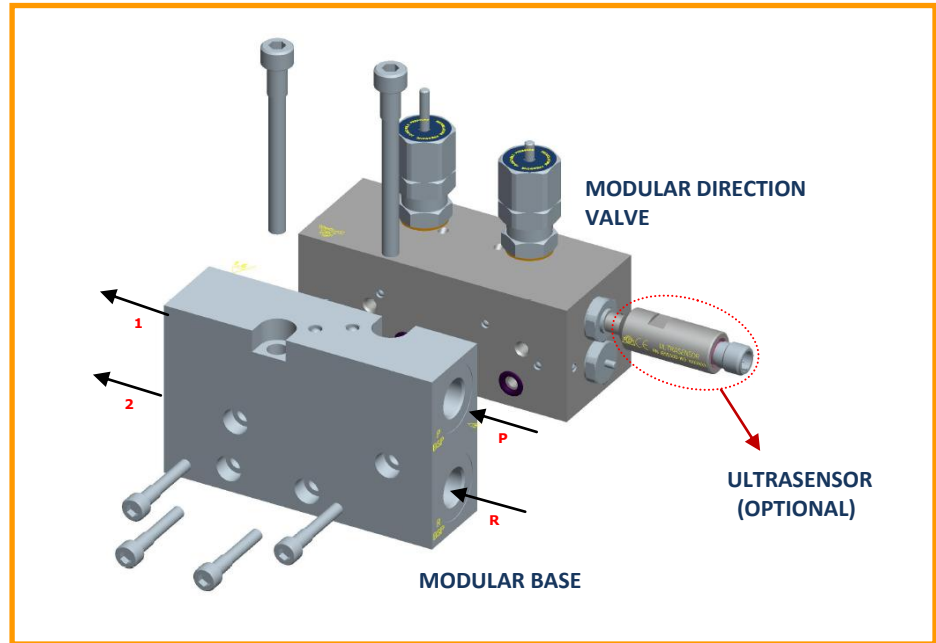
- **MODULAR BASE:**
MEANS FAST MAINTENANCE,
MINIMUM DOWNTIME AND
LESS CONTAMINATION

APPLICATIONS

- **DUAL LINE:** INVERSION OF
DUAL LINE SYSTEMS
- **PROGRESSIVE AND ZONED
SYSTEMS:** BY PLUGGING
PORT 1 OR 2. THE VALVE
CAN BE USED FOR ZONE
COMPLEX CIRCUITS
- **GREASE APPLICATIONS:**
PARTICULARLY SUITED FOR
GREASE, IT CAN BE APPLIED
TO ANY CIRCUIT REQUIRING
A 4/2 VALVE

HYDRAULIC MODULAR DIRECTIONAL VALVE (4/2)

A modular directional valve for oil and grease in Dual Line and hydraulic systems for pressure 60÷300 bar (870÷5431 psi).

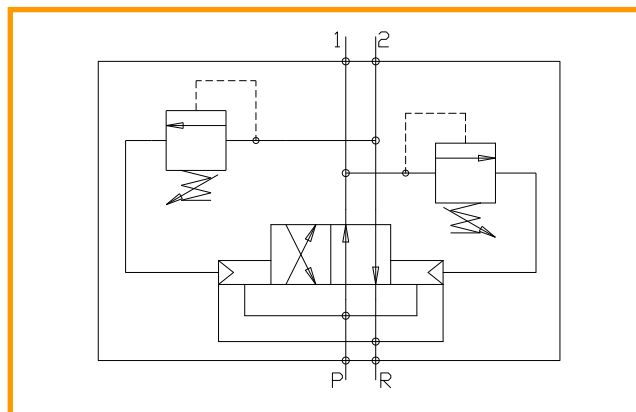


MODULAR BASE, THE INNOVATIVE SOLUTION

The Modular Directional Valve (4/2) is a completely new valve which has been designed to satisfy a wide range of requirements.

The key feature is the Modular base which has all hydraulic connections.

This means fast and easy replacement in the field without disturbing pipework and minimizing downtime. Untouched pipework avoids the risk of contaminating circuit.



HYDRAULIC SCHEME

CONTACTS

www.dropsa.com
sales@dropsa.com

ITALIA

Dropsa SpA
 t. +39 02-250791
 f. +39 02-25079767

U.K.

Dropsa (UK) Ltd
 t. +44 (0)1784-431177
 f. +44 (0)1784-438598

GERMANY

Dropsa GmbH
 t. +49 (0)211-394-011
 f. +49 (0)211-394-013

FRANCE

Dropsa Ame
 t. +33 (0)1-3993-0033
 f. +33 (0)1-3986-2636

U.S.A.

Dropsa Corporation
 t. +1 586-566-1540
 f. +1 586-566-1541

AUSTRALIA

Dropsa Australia Ltd.
 t. +61 (02)-9938-6644
 f. +61 (02)-9938-6611

BRAZIL

Dropsa do Brasil
 t. +55 (0)11-563-10007
 f. +55 (0)11-563-19408

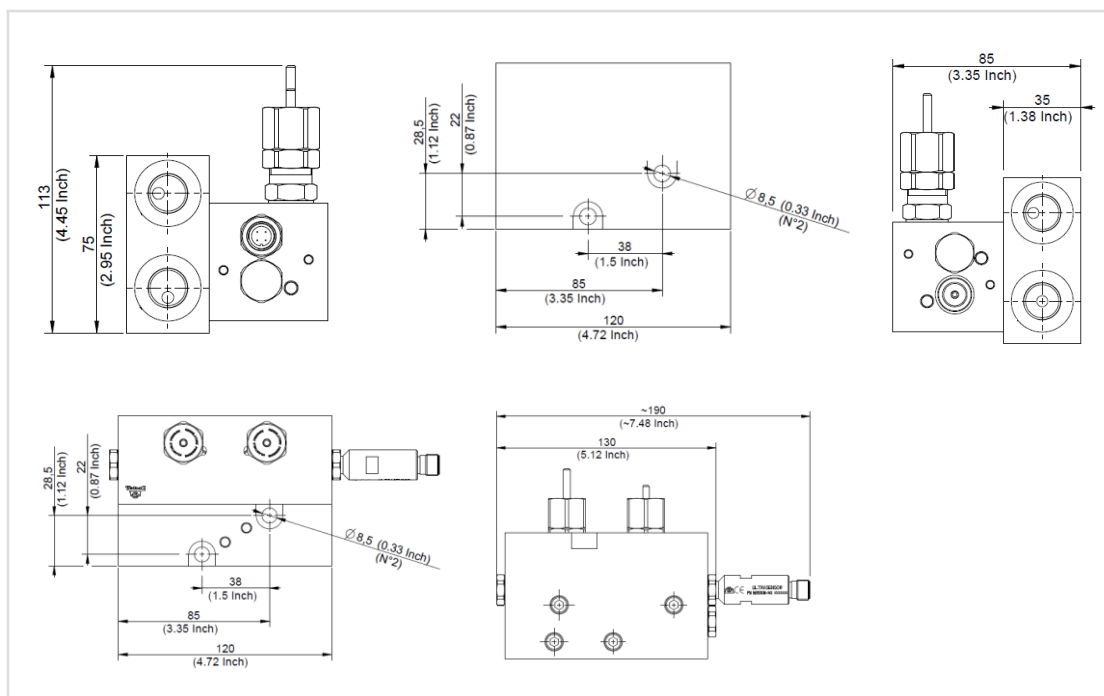
CHINA

Dropsa Lubrication
 Systems (Shanghai)
 Co., Ltd
 t. +86 (021) 67740275
 f. +86 (021) 67740205

TECHNICAL INFORMATION

TECHNICAL CHARACTERISTICS	
Max delivery (Max grease Viscosity NLGI 2)	300 cm ³ /min.
Working pressure (Adjustable)	60÷300 bar (870÷5431 psi)
Lubricants	Oil min. 32 cSt max. 1000 cSt Grease max. NLGI 2
Lubricant connections (R – P – 1 – 2)	3/8" BSP 3/8" NPT
Protection grade	IP55
Working temperature	-20° C ÷ + 50° C (-4° ÷ +122° F)
Working Humidity	90°max.
Weight	4.7 Kg (10.4 lb)

DIMENSIONS



ORDERING INFORMATION

1. MODULAR DIRECTIONAL VALVE (BASE NOT INCLUDED)		
ITEM	DESCRIPTION	PART NUMBER
HYDRAULIC	Hydraulic inverter 4/2 60÷300 bar without sensor	0086401
INVERTER	Hydraulic inverter 4/2 60÷300 bar with Atex sensor	0086408



2. MODULAR BASE		
ITEM	DESCRIPTION	PART NUMBER
MODULAR BASE	3/8" BSP	3072628
	3/8" NPT	3072638

SPARE PARTS/OPTIONL		
ITEM	DESCRIPTION	PART NUMBER
ULTRASENSOR	"Ultrasensor" (Sensor of inversion control) with plug	18814
O-RING	O-Rings "Ultrasensor"	18814
O-RINGS	Seal O-Ring between valve and base (No. 4)	18908
GASKET	Gasket fitting pressure regulator	156029
Connector	Connector M12	39999
Sensor	Atex inductive sensor (Ex II 1D Ex iaD 20 T 90°C + Ex II 2G Ex ia IIC T6)	1655332