

LINE 02 - VALVE

6-way electro-pneumatic valve

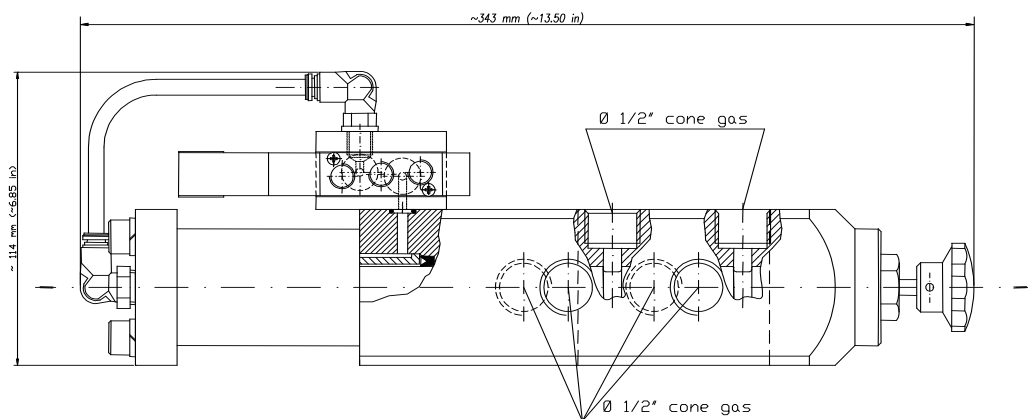


Product description

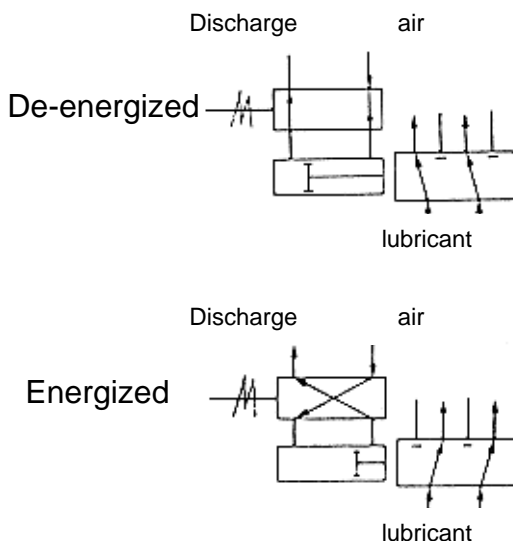
This valve has been designed to control lubricant flow (oil and grease). Piston is made of hardened and ground steel. It is driven by a pneumatic cylinder controlled by a 4-way solenoid valve. This device is normally used in dual line lubrication systems, where the system is provided with two pumps, one is a backup. In this case, when the controlling PE pump electric equipment, generates an alarm the electro-valve is operated: PE pump stops and PR backup pump starts-up and carries out a lubrication cycle.

Technical characteristics	
Air MIN pressure	3 bar(44.1 psi)
Air MAX pressure	10 bar(147 psi)
Driving voltage	110 Vac
Power absorption	4 W
Driving-air inlet	1/4" gas
Lubricant outlet	1/2" gas cone

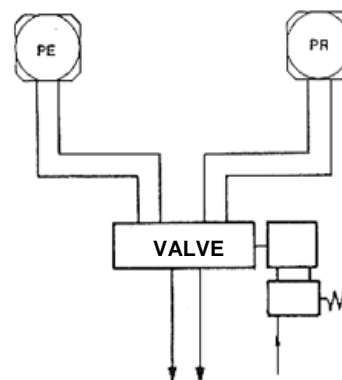
Serial n°	Description
1651350	Electro-pneumatic valve



Symbolic diagram

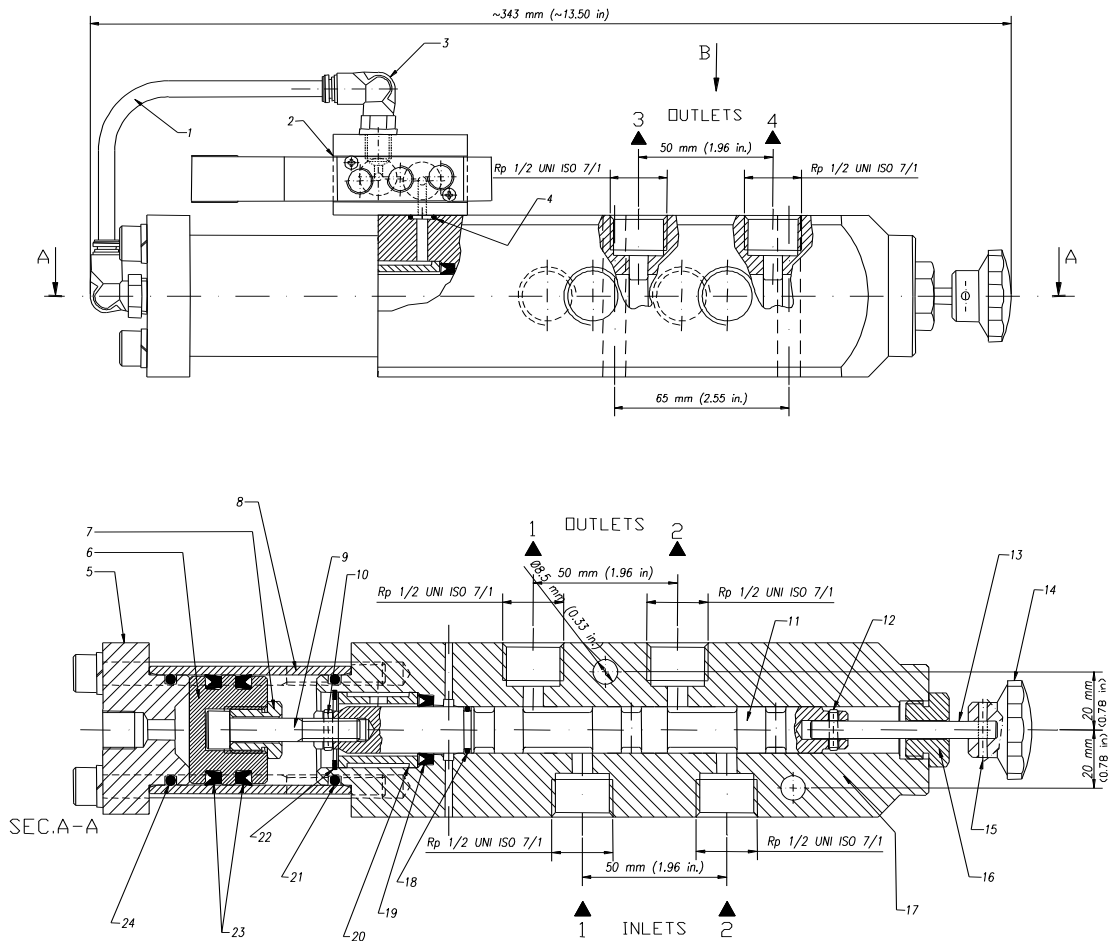


Example of application



INE 02 - VALVE

6-way electro-pneumatic valve



Pos.	Description	Part n°	Q.ty	Pos.	Description	Part n°	Q.ty
1	Nylon pipe	5717301	1	13	Hand drive shaft	0083908	1
2	Kit EV 110Vac	3132568	1	14	Hand-wheel	1651203	1
3	90° push in pipe fitting	3084566	1	15	Spirol 3x18 mm	0016815	1
4	O-seal	0018806	1	16	Guide connection	0083911	1
5	Cover	0083907	1	17	Valve body	1651351	1
6	Piston	0083905	1	18	O-seal	0061103	1
7	Pipe fitting	0083910	1	19	Oleoite O-seal	1651066	1
8	Cylinder	0083906	1	20	Spacing bar	3011092	1
9	TC screw 8x45mm (0.31x1.77 in.) with hole	0083909	1	21	Gasket	0018838	1
10	Spirol 3x14 mm (0.11x0.55 in.)	0016812	1	22	Spring washer	0018666	1
11	Distributor Piston	1651352	1	23	Oleoite O-seal	1651065	2
12	Spirol 3x14 (0.11x0.55 in.)	0016812	1	24	O-seal	0018838	1

Notice: At least once a year, it is recommended to disassemble the valve and carry out a general cleaning. It is also recommended to check seal of gaskets.

DROPSA

ITALIA

Dropsa SpA
t. +39 02-250791
f. +39 02-25079767

U.K.

Dropsa (UK) Ltd
t. +44 (0)1784-431177
f. +44 (0)1784-438598

GERMANY

Dropsa GmbH
t. +49 (0)211-394-011
f. +49 (0)211-394-013

FRANCE

Dropsa Ame
t. +33 (0)1-3993-0033
f. +33 (0)1-3986-2636

CHINA

Dropsa Lubrication Systems
(Shanghai) Co., Ltd
t. +86 (021) 67740275
f. +86 (021) 67740205

U.S.A.

Dropsa USA Incorporated
t. +1 586-566-1540
f. +1 586-566-1541

AUSTRALIA

Dropsa Australia Pty
t. +61 (02)-9938-6644
f. +61 (02)-9938-6611

BRAZIL

Dropsa Do Brasil Ind.e
Com.Ltda
t. +55 (0)11-563-10007
f. +55 (0)11-563-19408