

Characteristics

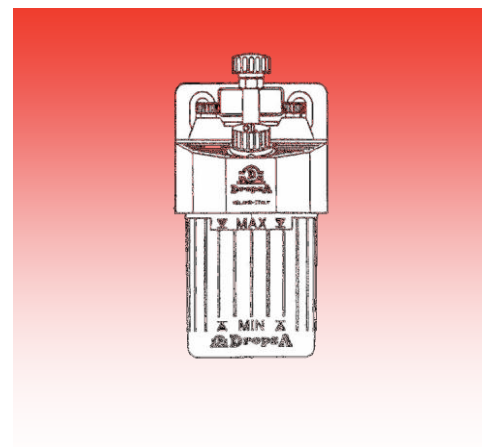
- **Output:**
2 cm³ per full operation;
- **Pressure:**
5 bar (0,5 Mpa) 200 psi;
- **Reservoir:**
200 cm³
semi transparent;
- **Output port:**
1/8" BSP;
- **Suction filter:**
40 micron;
- **Compatible fluids:**
Vegetablr Oil, Mineral oil,
Silicon oils, ink;
- **Viscosity:**
min 100 cSt
max 250 cSt.

Two-outlet manual pump with built-in flow regulator

Mechanically operated pistons pump for single line orifice type (01) lubrication systems.

Installing the pump in a central position in the system allows the user to extend the reach of the system with equal tubing length on either side.

The pump can also be operated with a single outlet by simply plugging the second outlet.

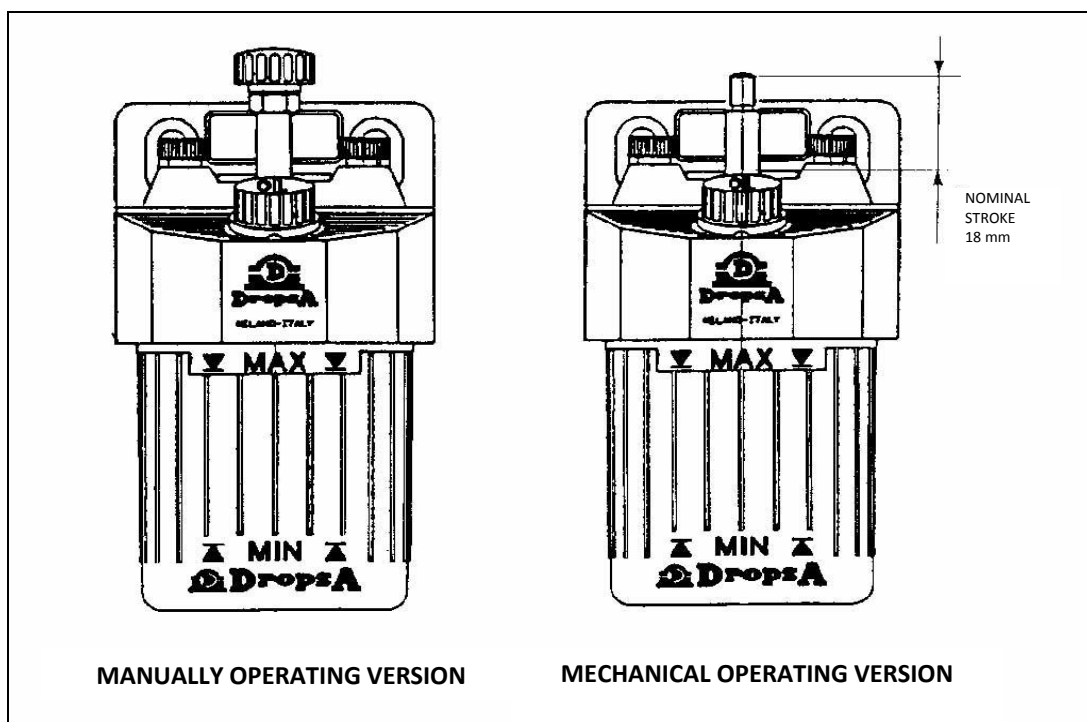


216035 Manually operated version.

The pump is operated by pressing the centrally-located handle. This action fills the delivery chamber with lubricant and a spring return generates the pressure to distribute the oil in the lubrication lines.

216055 Pump for mechanical cam or lever operation.

The pump is operated by activating the central rod identical to the manual version. This is done by located a lever or cam arrangements for the 18mm (max) of stroke.



Applications

- Single Line orifice type (01) Lubrication systems.

Contacts

www.dropsa.com
sales@dropsa.com

ITALIA

Dropsa SpA
 t. +39 02-250791
 f. +39 02-25079767

U.K.

Dropsa (UK) Ltd
 t. +44 (0)1784-431177
 f. +44 (0)1784-438598

GERMANY

Dropsa GmbH
 t. +49 (0)211-394-011
 f. +49 (0)211-394-013

FRANCE

Dropsa Ame
 t. +33 (0)1-3993-0033
 f. +33 (0)1-3986-2636

CHINA

Dropsa Lubrication Systems
 (Shanghai) Co., Ltd
 t. +86 (021) 67740275
 f. +86 (021) 67740205

U.S.A.

Dropsa Corporation
 t. +1 586-566-1540
 f. +1 586-566-1541

AUSTRALIA

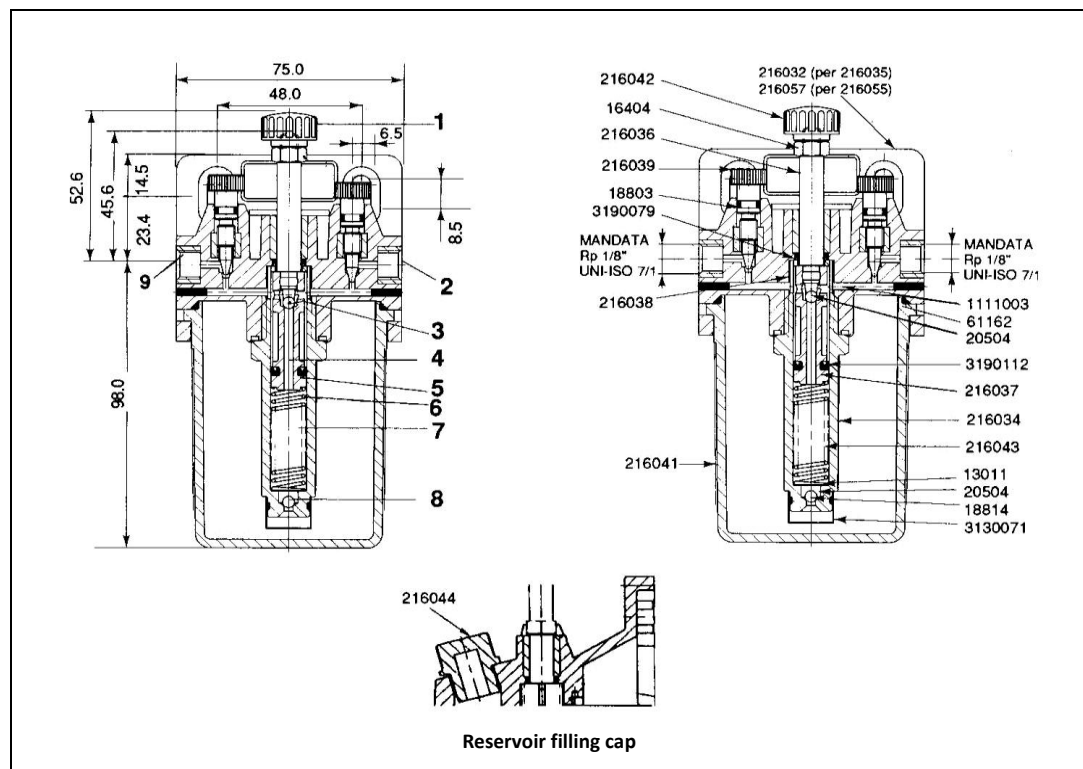
Dropsa Australia Ltd.
 t. +61 (02)-9938-6644
 f. +61 (02)-9938-6611

BRAZIL

Dropsa Remonlub
 t. +55 (0)11-563-10007
 f. +55 (0)11-563-19408

Two-outlet manual pump with built-in flow regulator

Dimensions



Operation

By pressing handle 1, the spring (6) is loaded as the piston (5) is displaced. The Fluid contained in the lower chamber (7) is injected into via the conduit (4) and the check valve (3) into the upper output chamber.

When the handle is released, the spring (6) pusher the piston (5) back to its starting position delivering lubricant to the outlets (2 and 9). At the same time the lower chamber (7) is re-primed via the check valve (8)

Note: if the handle returns to its start position quickly it is indicative of no oil in the tank or a broken lubrication line.

Installation / Start Up / Priming

Fill the tank. Activate the handle numerous times until lubricant can be seen coming from the outlets.

Note: During installation, priming the pump can be assisted by closing the outlets.

Maintenance

Periodically check the Filter for blockage. Clean as necessary

To access and remove the filter twist the reservoir anti-clockwise (bayonet type fitting).

The reservoir can be reinstalled by reversing the procedure.

Order Informations

HOW TO ORDER

PART NR.	DESCRIPTION
0216035	Manual pump 22 cc By-pass
0216055	Manual pump 22 cc Cam