

Contacts

www.dropsa.com
sales@dropsa.com

ITALY

Dropsa SpA
t. +39 02-250791
f. +39 02-25079767

U.K.

Dropsa (UK) Ltd
t. +44 (0)1784-431177
f. +44 (0)1784-438598

GERMANY

Dropsa GmbH
t. +49 (0)211-394-011
f. +49 (0)211-394-013

FRANCE

Dropsa Ame
t. +33 (0)1-3993-0033
f. +33 (0)1-3986-2636

CHINA

Dropsa Lubrication
Systems (Shanghai) Co.,
Ltd
t. +86 (021) 67740275
f. +86 (021) 67740205

U.S.A.

Dropsa Corporation
t. +1 586-566-1540
f. +1 586-566-1541

AUSTRALIA

Dropsa Australia Ltd.
t. +61 (0)2-9938-600644
f. +61 (0)2-9938-6611

BRAZIL

Dropsa
t. +55 (0)11-563-10007
f. +55 (0)11-563-19408

Single Acting Air Operated Grease Pump

AIR OPERATED GREASE PUMPS

SINGLE ACTING AIR OPERATED GREASE PUMP

Pumps of sturdy construction for heavy duty: steel body, hardened and lapped steel piston, pneumatic driven cylinder housing a light alloy piston equipped with oil-resisting rubber gasket.

A 3-way (line- cylinder-discharge) solenoid control valve is required (available on demand) **code 45273** (110V 50 Hz.), **code 45274** (220V 50 Hz.) **code 45275** (24V 50 Hz.) **code 45297** (24V dc)

pumps are available with 3 different reservoirs:

A: Reservoir with follower plate (with or without spring) hooked to the level indicating rod (height dimension changeable).

B: Reservoir with level indicating rod and follower plate sliding along the rod (height dimension fixed).

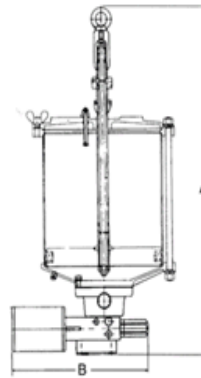
C: Pressurized reservoir for the pumping of thick grease.

TECHNICAL INFORMATION:

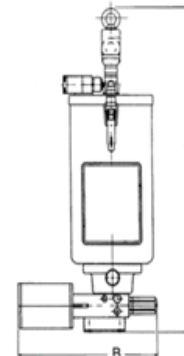
Ratio: 50:1
Driven air pressure: 0,3 MPa (3 bar) min.
0,8 MPa (8 bar) max
Adjustable delivery: from 0,5 to 2 cm³ per stroke.
Lubricant outlet: Rp 1/4 UNI-ISO 7/1
Air compressed inlet: G 1/8 UNI-ISO 228/1 – Pipe housing Ø 6
Re-filling valve: G 1/2 UNI-ISO 228/1



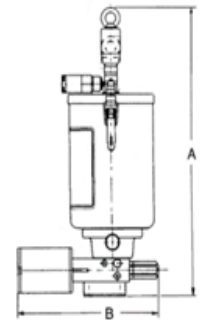
3413002



3413014



3413012



3413018

Part No.	Reservoir Kg. (lb.)	Lubricant	Height mm. (in.)	Width mm. (in.)	Depth mm. (in.)	Weight Kg. (lb.)	Characteristics
MODEL A: PUMPS WITH FOLLOWER PLATE HOOKED TO THE LEVEL ROD (height dimension changeable)							
3413002	5 (11)	NLGI 1	524/754 (20/29.7)*	280 (11)	170 (6.7)	11,5 (25.36)	With minimum level electric contact
3413001	2 (4.4)	NLGI 2	579/864 (22.8/34)*	280 (11)	150 (5.9)	7,7 (16.98)	With spring-without minimum electric level
3413003	1 (2.2)	NLGI 2	357/454 (14.1/17.9)*	280 (11)	150 (5.9)	6,2 (13.67)	With spring-without minimum electric level
3413007	1 (2.2)	NLGI 1	334/474 (13.1/18.7)*	280 (11)	150 (5.9)	5,3 (11.68)	Without minimum level electric contact
MODEL B: PUMPS WITH FOLLOWER PLATE SLIDING ALONG THE ROD (height dimension fixed)							
3413014	10 (22)	NLGI 1	885 (34.8)	280 (11)	310 (12.2)	26,5 (58.43)	Without minimum level electric contact
3413012	5 (11)	NLGI 1	558 (22)	280 (11)	160 (6.3)	11,8 (26.02)	With minimum level electric contact
3413016	5 (11)	NLGI 1	558 (22)	280 (11)	170 (6.7)	12 (26.45)	With minimum level and re-filling filter.
3413018	3 (6.6)	NLGI 1	498 (19.6)	280 (11)	160 (6.3)	11,2 (24.70)	With minimum level electric contact
MODEL C: PUMPS WITH PRESSURISED RESERVOIR							
3413019	10 (22)	NLGI 3	990 (39)	280 (11)	192 (7.6)	27,3 (60.20)	With minimum level electric contact
3413005	5 (11)	NLGI 3	680 (26.8)	280 (11)	192 (7.6)	19,5 (43.00)	With minimum level electric contact

*The two heights refer to the empty/full reservoir.