

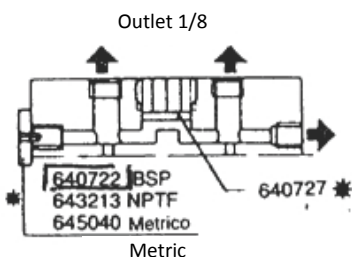
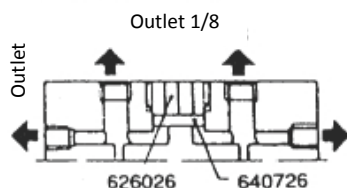
Characteristics

- **Working pressure:**
max. 400 bar
min. 20 bar;
- **Working pressure without check valves for recirculating systems:**
min. 12 bar (170 psi);
- **N.° cycles per minute:**
max. 120;
- **Driving torque for tie rods:**
max. 3kgm.

Serial "SA" Metering Elements

Progressive metering elements with steel body, hardened piston, high pressure sealing ring, device for connecting or separating the outlets.

TO CONNECT OUTLETS

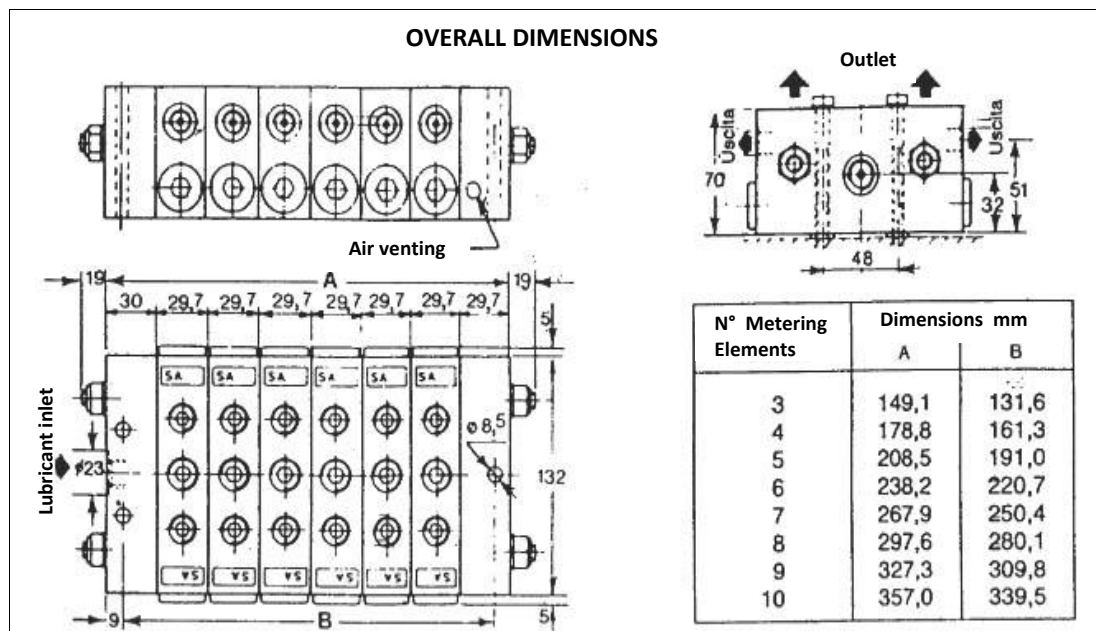


* Order separately

In order to get a perfect working, ensure that the group has been correctly ported. You can double the delivery by converting from single outlet. Remove gasket **640727** and replace screw **640726** as shown in the side drawing. The top outlets are always 1/8" BSP, also for manufacture metric type.



Dimensions



Applications

- Used in recirculating systems
e.g.: applications on large size press.

Serial "SA" Metering Elements

Connections for elements

CHARACTERISTICS								BRIDGE CONNECTIONS									
Fitting (R)								Hex									
Thread	A	B	C	Hex	L	Pipe seat ϕ	P.Nr.	Hex	L	H	I	P.Nr.	Hex	L	H	I	P.Nr.
BSP	1/4	1/8	1/4	17	46	8	640479	19	60	22,5	29,7	640039	19	60	34	29,7	640057
Silver color	Silver Color																
NPTF	1/4	1/8	1/4	19	45	-	640131	19	60	24,5	29,7	643155	19	60	32	29,7	643160
Black color	Black color																



Accessories for "SA" Metering Elements

PRESSURE INDICATORS

CHARACTERISTICS			NORMAL (N)				WITH MEMORY (M)				WITH MEMBRANE (P)		
Thread	Max. Pressure bar	Color of rod or membrane	Hex	L	C. Max.	P.Nr.	Hex	L	C. Max.	P.Nr.	Hex	L	P.Nr.
BSP 1/8	20	Blue	12	31,5	5	3290019	12	44	5	-	14	28,5	-
	30	Silver				3290006				3290000			3290012
	50	Red				3290007				3290001			-
50	Bronze	-				-				3290013			
Silver Color	75	White				-				3290022			-
	100	Yellow				3290008				3290002			3290014
	150	Black				3290009				3290003			3290015
	200	Green				3290010				3290004			3290016
	250	Light blue				3290011				3290005			3290017



Serial "SA" Metering Elements

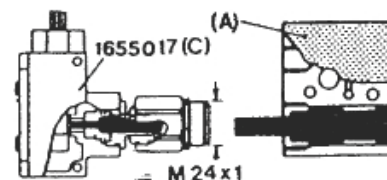
Accessories for "SA" Metering Elements

Cycle control Elements

MOVEMENT MONITORING OF METERING ELEMENT PISTON BY MEANS OF A MICROSWITCH

A microswitch with a change over contact is controlled by an extended rod, integral with the metering element piston. This device is suitable for the control of the lubrication cycle at preselected intervals.

Characteristic of the contact: Max. 220 V, 50-60 Hz -5A.

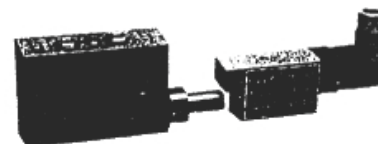
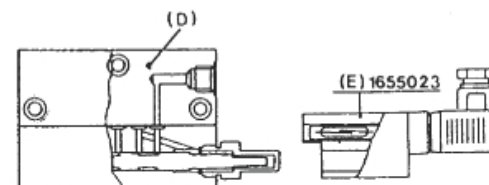


Outlets	Part Number					
	A			A+C		
	1.5 cc. .09 cu.in.	3 cc. .18 cu.in.	4.5 cc. .27 cu.in.	1.5 cc. .09 cu.in.	3 cc. .18 cu.in.	4.5 cc. .27 cu.in.
BSP	644164	644165	644166	644182	644183	644184
NPTF	643359	643360	643361	643377	643378	643379

MOVEMENT MONITORING OF METERING ELEMENT PISTON BY MEANS OF A MAGNETIC CONTACT

A permanent magnet applied to the piston acts on a "reed" contact, which if connected to an electronic counter, can visualize up to 500 movements per minute. The Reed contact is inserted in a water tight container and can be easily substituted. The metering element with such a device, if fixed to a metal part, must have a gap of at least 10 mm (.39 in.). The best mounting is with the device upwards and the outlets downwards.

Characteristics of the contact: Max. 220 V 50-60 Hz – 0.8A.

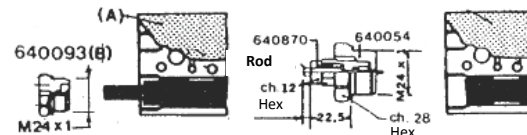
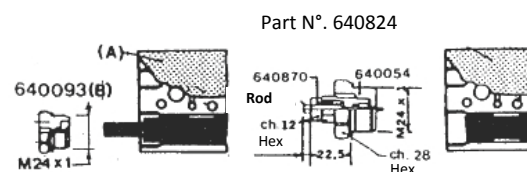


Outlets	Part Number					
	D			D+E		
	1.5 cc. .09 cu.in.	3 cc. .18 cu.in.	4.5 cc. .27 cu.in.	1.5 cc. .09 cu.in.	3 cc. .18 cu.in.	4.5 cc. .27 cu.in.
BSP	644191	644192	644193	644200	644201	644202
NPTF	643386	643387	643388	643395	643396	643397

VISUAL MONITORING OF THE METERING ELEMENT PISTON'S MOVEMENT STANCH FITTING

It can be installed for visual indication or using the movement of the piston pin.

Outlets	Part Number					
	A			A+B		
	1.5 cc. .09 cu.in.	3 cc. .18 cu.in.	4.5 cc. .27 cu.in.	1.5 cc. .09 cu.in.	3 cc. .18 cu.in.	4.5 cc. .27 cu.in.
BSP	644164	644165	644166	644173	644174	644175
NPTF	643359	643360	643361	643368	643369	643370

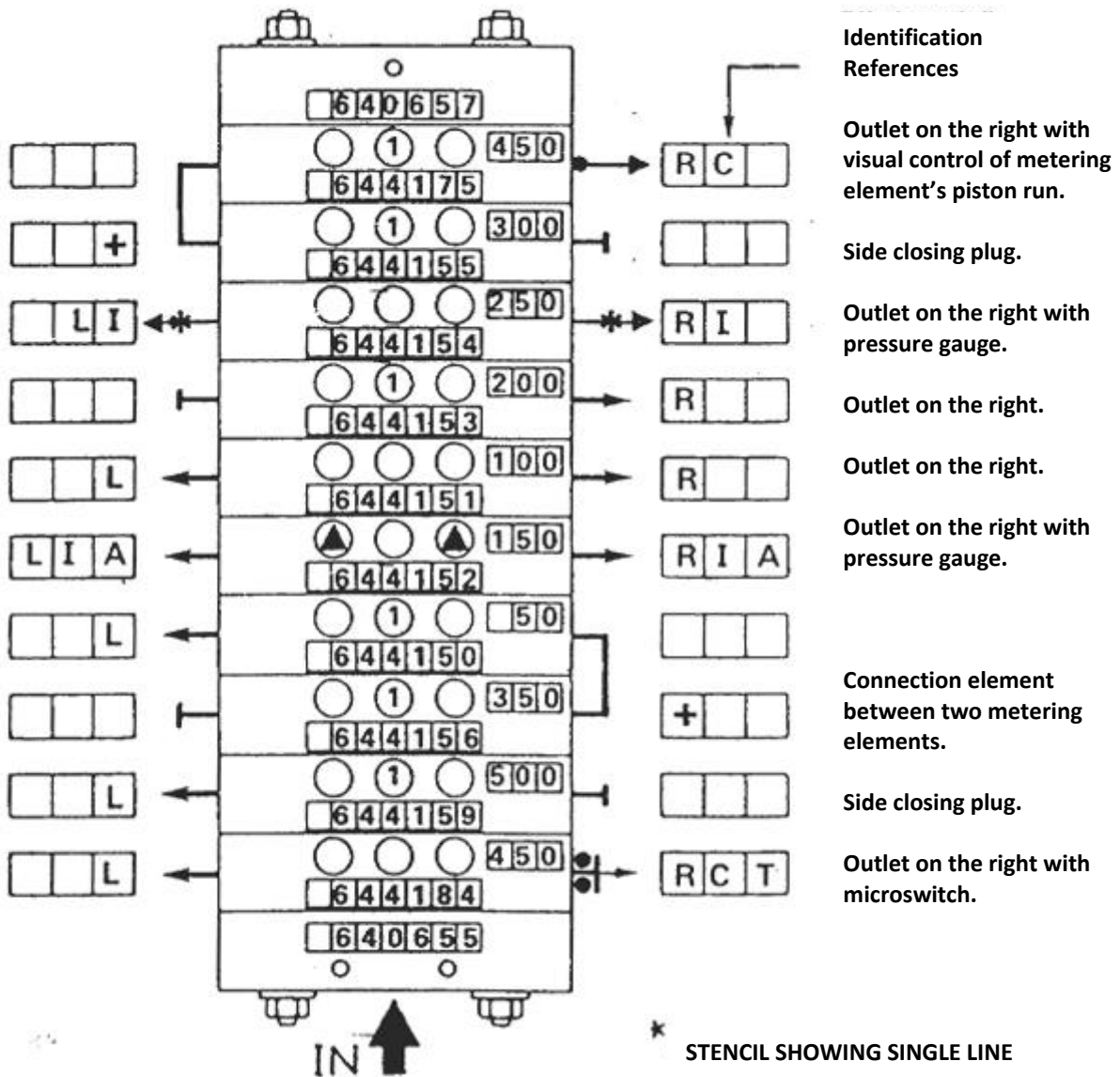


Serial "SA" Metering Elements

Composition of Serial "SA" Metering Elements Blocks

IDENTIFICATION DIAGRAM FOR ALL DEVICES, WHICH CAN BE USED IN A BLOCK OF 10 METERING ELEMENTS

For description of the legend, see the following page.



Note: Letter "R" indicates assembly on the right.
Letter "L" indicates assembly on the left.

The block may be ordered without living the single code numbers, but just using the identification references. In this case the block will be identified as follows:

□450LRCT □500L □350+50L □150LIARIA □100LR □200R □250LIRI □300+450RC

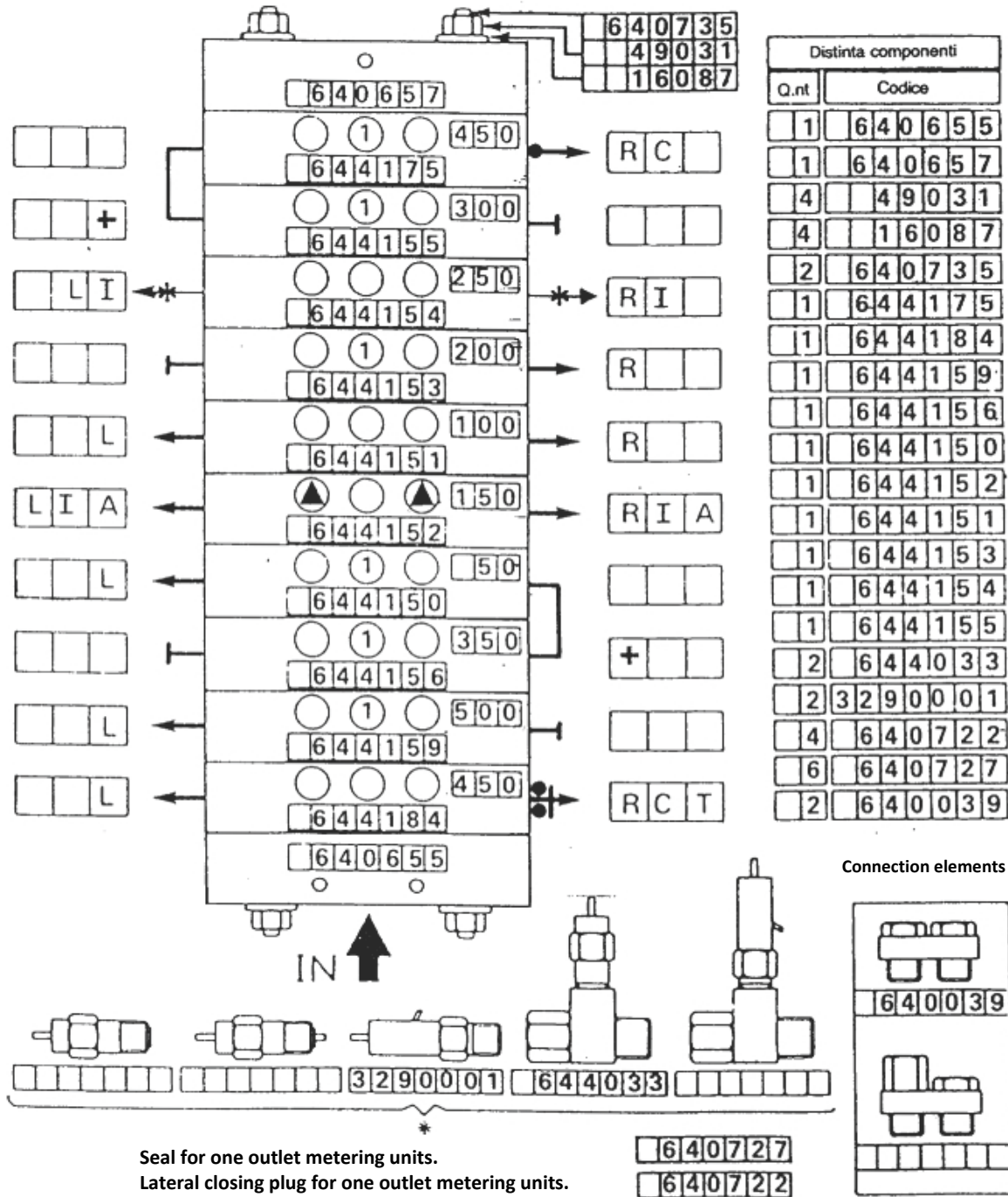
Symbol + shows that the two components are connected by means of a bridge connection. Identification number of the component refers to the number of the metering element given on the catalogue: with the Q value multiplied by 100.

e.g. 150 corresponds to a component with a 1,5 cc metering element.

Serial "SA" Metering Elements

Composition of Serial "SA" Metering Elements Blocks

LISTING DIAGRAM FOR ORDERING A BLOCK MADE OF DIFFERENT PARTS



Seal for one outlet metering units.
Lateral closing plug for one outlet metering units.

LEGEND

	CF	Microswitch		+	Bridge connections	R	Outlet on the right
	CC	Reed		*	Pressure gauge	L	Outlet on the left
	C	Rod		▲	Pressure gauge	F	Side closing

Contacts

www.dropsa.com
sales@dropsa.com

ITALIA

Dropsa SpA
t. +39 02-250791
f.+39 02-25079767

U.K.

Dropsa (UK) Ltd
t. +44 (0)1784-431177
f. +44 (0)1784-438598

GERMANY

Dropsa GmbH
t. +49 (0)211-394-011
f. +49 (0)211-394-013

FRANCE

Dropsa Ame
t. +33 (0)1-3993-0033
f. +33 (0)1-3986-2636

CHINA

Dropsa Lubrication Systems
(Shanghai) Co.,Ltd
t. +86 (021) 67740275
f. +86 (021) 67740205

U.S.A.

Dropsa Corporation
t. +1 586-566-1540
f. +1 586-566-1541

AUSTRALIA

Dropsa Australia Ltd.
t. +61 (0)2-9938-6644
f. +61 (0)2-9938-6611



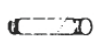



BRAZIL

Dropsa Remonlub
t. +55 (0)11-563-10007
f. +55 (0)11-563-19408

Serial "SA" Metering Elements

Order Informations

Use this schedule for prices of assembly units in price list. The assembly unit comprises: inlet element, metering elements, end element, tie rods with nuts and washers.

CODES TABLE											
Nut	Washer	Tie rod		Inlet element		Metering element		End element			
											
QUANTITY FOR GROUP											
4	4	2		1		Max. 10		1			
P. Nr.	P. Nr.	N** eleme nts	P. Nr.	Part Number		Q cc.	Part Number		P. Nr.		
				BSP 3/8	NPTF 3/8		BSP 3/8	NPTF 3/8			
49031	16087	3	640728	640655	643096	0.5	644150	643450	640657		
		4	640729			1	644151	643451			
		5	640730			1.5	644152	643452			
		6	640731			2	644153	643453			
		7	640732			2.5	644154	643454			
		8	640733			3	644155	643455			
		9	640734			3.5	644156	643456			
		10	640735			4	644157	643457			
								4.5		644158	643458
								5		644159	643459

* N°. metering elements in assembled unit.

SPARE PARTS

Complete set of "O-rings" for:

Inlet element, **Part Number 640813.**

Metering element, **Part Number 640812.**

End element, no sealing rings

Inlet element (Viton), **Part Number 640918.**

Metering element (Viton), **Part Number 640919.**