

CHARACTERISTICS

- FOR OIL AND GREASE NLGI 000
- COMPATIBLE WITH 01 SYSTEM
33V SYSTEM
26 SYSTEM
- OPTILEV : THE SOLID STATE OPTICAL SENSOR LEVEL THAT WORKS BOTH OIL AND GREASE NLGI000.
- LEVEL SENSING WITH NPN AND PNP OUTPUT AS STANDARD
- RESERVOIR: 3 OR 6 LT
- DELIVERY:
350 - 500 cc/MIN (21,35 - 30,5 CU.IN)
600-850 cc/MIN (36,61 - 51,87 CU.IN)
- VENT VALVE INCLUDED
- ADJUSTABLE PRESSURE VALVE

APPLICATIONS

- MEDIUM DIMENSION PRESS
- MACHINE TOOLS
- MACHINE FOR PACKAGING PRODUCTION
- REDUCERS
- PRESS FOR PLASTIC INJECTION

EASY AND AFFORDABLE SOLUTION FOR INJECTORS AND PROGRESSIVE SYSTEMS

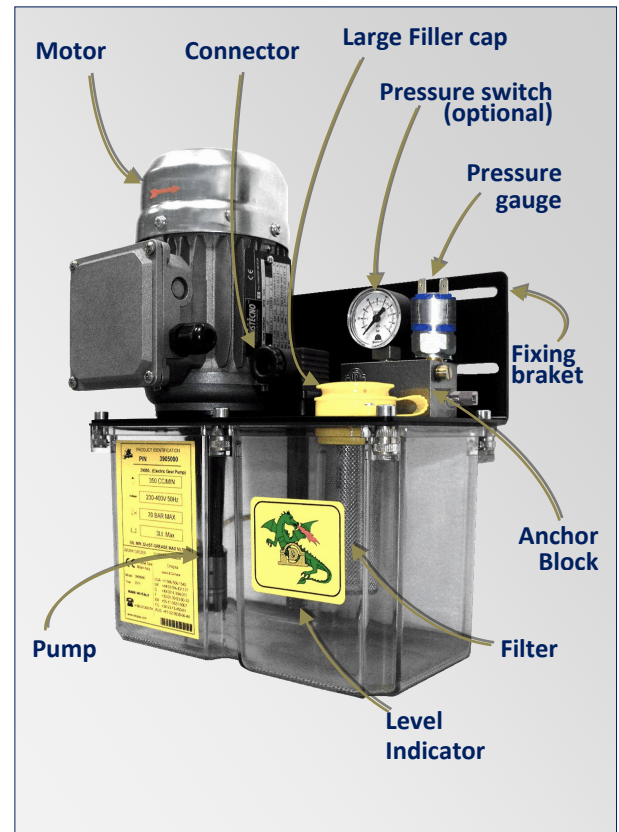
AN EFFICIENT AND ECONOMICAL APPROACH

DRAGON-X is a compact and versatile pump that joins efficiency and performance in a simple all-inclusive pump package for injector and progressive systems both for oil and fluid grease NLGI 000.

EASE OF USE

The external position of the pressure manifold block that houses all the functional components makes it easy to carry out any adjustments and connections.

The reservoir can be filled in a simple and quick manner thanks to the oversized filler cap.



AVAILABLE IN TWO VERSIONS:

- **VERSION WITH FLOATING SWITCH FOR OIL LUBRICATION**

The system with floating level indicator can be used with mineral lubricating oil. The floating level indicator is equipped with voltage free contact and does not require power- allowing interchange-ability with other Dragon series pumps.

The floating level indicator can be easily replaced with the optical one without any modification on the pump.

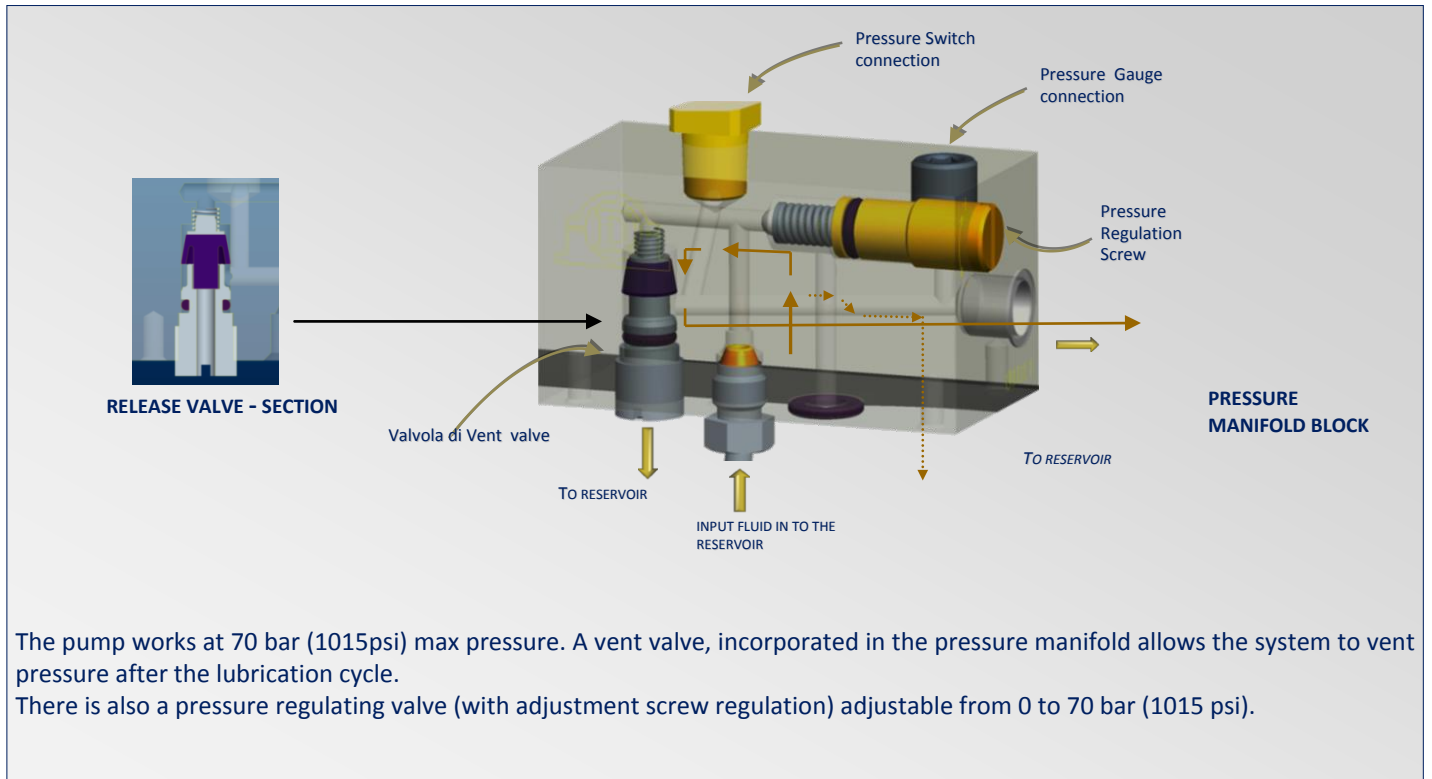
- **VERSION WITH OPTICAL SENSOR LEVEL FOR OIL AND FLUID GREASE LUBRICATION**

The **DRAGON-X** with optical sensor level indicator can be used both oil and fluid grease.

Low level monitoring of lubricant up to NGLI000 is achieved thanks to Dropsa's patented Optical level sensing technology: completely solid state with both NPN and PNP outputs as standard.

A perfect solution for many applications in a single product.

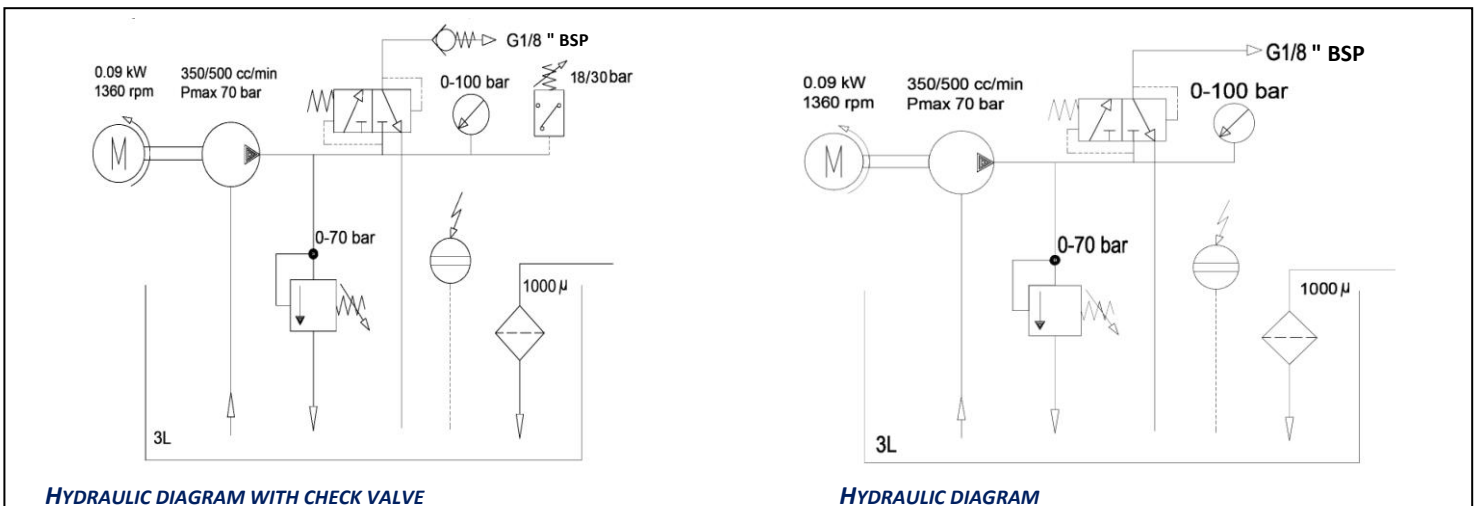
OPERATION PRINCIPLE



SUITABLE FOR:

- Lubrication system with flow restrictors and re-circulating system at working pressure < 20 bar (290psi) - **01 System**
- Lubrication system with injectors with working pressure < 50 bar (735 psi) - **33V System**
- Progressive lubrication system and re-circulating system, using progressive dividers at working pressure < 70 bar (1015 psi) - **26 System**. If needed a check valve can be fitted to the outlet to prevent any pressure venting when backpressure needs to be maintained.

HYDRAULIC DIAGRAMS

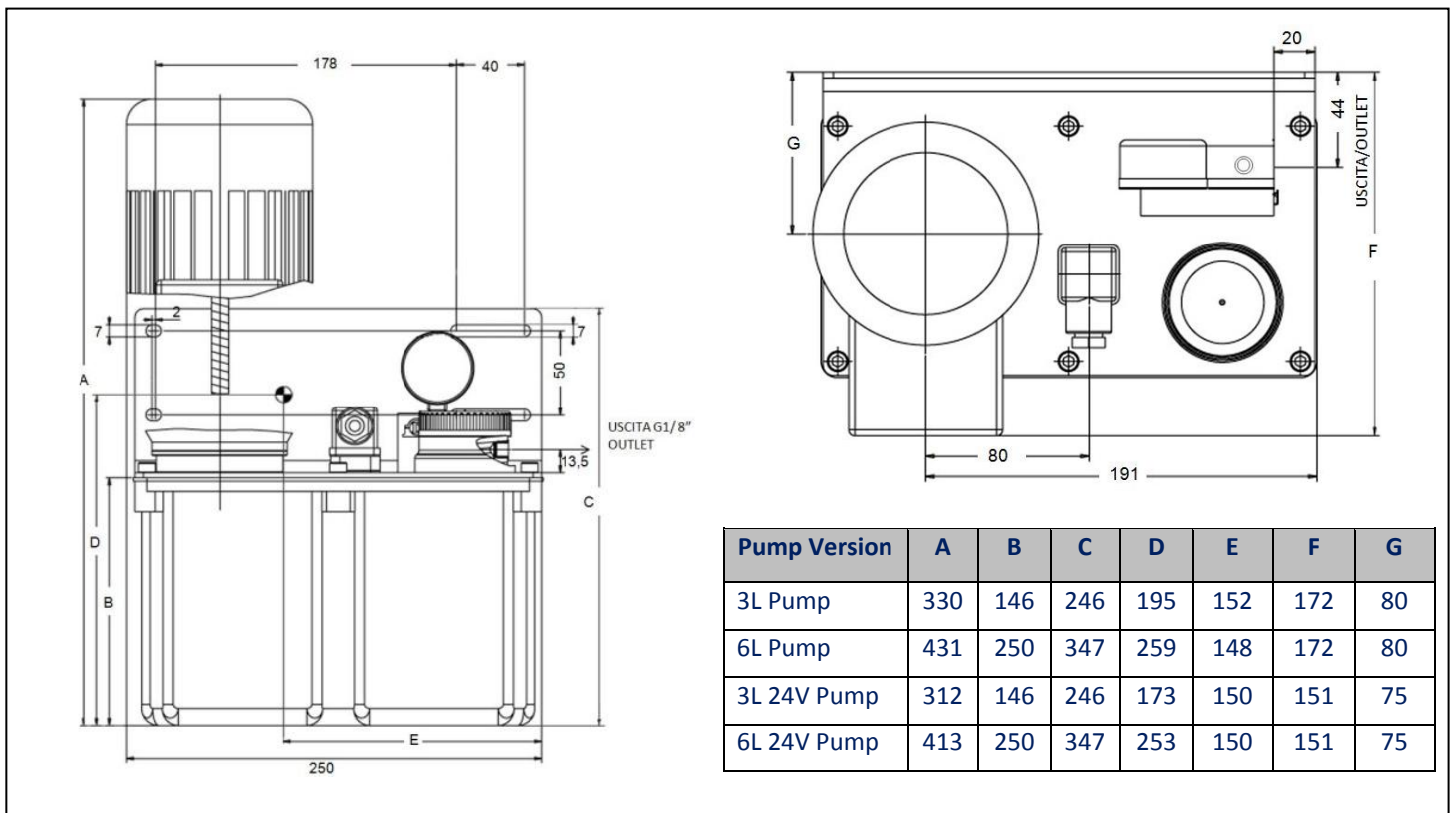


VIP5 IS AN IDEAL CONTROL DEVICE FOR THIS SYSTEM

TECHNICAL CHARACTERISTICS	
Motor degree of protection	IP 55
Minimum level	Optical (oil and fluid grease versions) / With floating switch (only Oil version)
Optical power supply level	8÷28 V DC inversion protected
Optical level output signal	Type NPN/PNP short-circuit protected, off in the case of minimum level. Max 1.7A
Level connector (optical-floating switch)	DIN 43650
Floating level output signal	Clean contact 50V max voltage, 40 W max power. SPDT Contact.
Pressure switch	Contact closed in the case of max calibration pressure alarm
Pressure switch output signal	Voltage free contact max voltage 42V, max. power 100 W
HYDRAULIC CHARACTERISTICS	
Pumping system	Gear pump
Maximum operating pressures	- 70 bar -three-phase motor (with intermittent service max 5 min with pause ratio 1:1) - 40 bar (single-phase motor) - max 30 bar with continuous service
Outlet connection	G1/8" BSP
Tank capacity	3L/6L
Filter	Degree of filtering 1000 μ
By-pass	Adjustable 0 ÷70 bar – pre-calibrated 40bar (35bar for single-phase motors)
Temperature of use	+ 5 ÷ + 70 °C
Operating humidity	90 % rel. humidity
Permitted lubricants *	Mineral lubricating oil 32 cSt; grease max NLGI000
Storage temperature	-20 ÷ +65 °C
Continuous sound pressure level	< 70 dB(A)

N.b. The specifications refer to the temperature of use of +20°C (+68°F)

OVERALL DIMENSIONS





CONTACTS

sales@dropsa.com

ITALIA

Dropsa SpA
t. +39 02-250791
f.+39 02-25079767

U.K.

Dropsa (UK) Ltd
t. +44 (0)1784-431177
f. +44 (0)1784-438598

GERMANY

Dropsa GmbH
t. +49 (0)211-394-011
f. +49 (0)211-394-013

FRANCE

Dropsa Ame
t. +33 (0)1-3993-0033
f. +33 (0)1-3986-2636

CHINA

Dropsa Lubrication Systems
(Shanghai) Co., Ltd
t. +86 (021) 67740275
f. +86 (021) 67740205

U.S.A.

Dropsa USA Incorporated
t. +1 586-566-1540
f. +1 586-566-1541

AUSTRALIA

Dropsa Australia Pty
t. +61 (02)-9938-6644
f. +61 (0)2-9938-6611

BRAZIL

Dropsa Do Brasil Ind.e
Com.Ltda
t. +55 (0)11-563-10007
f. +55 (0)11-563-19408

ORDERING INFORMATION

STANDARD VERSIONS				
ELECTRIC MOTOR	FLOW RATE	TANK CAPACITY	PART NUMBER (with optical level to use oil and fluid grease)	PART NUMBER (with float level to use only oil)
230-400 V 50 Hz 3-phase- 0.09 KW 4P 265-460 V 60 Hz 3-phase- 0.11 KW 4P	350 CC	3 L	3905000	3905040
		6 L	3905001	3905041
	500 CC	3 L	3905004	3905044
		6 L	3905009	3905049
110 V 50 Hz single phase – 0,9 KW 4P	350 CC	3 L	3905007	3905047
		6 L	3905012	3905052
	500 CC	3 L	3905008	3905048
		6 L	3905013	3905053
230 V 50 Hz single phase – 0.09 KW 4P	350 CC	3 L	3905005	3905045
		6 L	3905010	3905050
	500 CC	3 L	3905006	3905046
		6 L	3905011	3905051
24V CC	600 CC	3 L	3905002	3905042
		6 L	3905003	3905043
	850 CC	3 L	3905014	3905054
		6 L	3905015	3905055

N.B. The specifications refer to the temperature of use of +20°C (+68°F)

SPARE PARTS		
ITEM	DESCRIPTION	PART NUMBER
PUMP	Flow rate 350 CC*	3099186
	Flow rate 500 CC*	3099187
MOTOR	230-400 V 50 Hz three-phase- 0.09 KW 4P 265-460 V 60 Hz three-phase- 0.11 KW 4P	3301544
	230 V 50 Hz single phase – 0.09 KW 4P	3301545
	110 V 50 Hz single phase – 0.09 KW 4P	3301546
	24V CC rpm	3301283
OPTICAL SENSOR LEVEL	For the 3L tank	1639201
	For the 6L tank	1639202
FLOAT ING LEVEL INDICATOR	For the 3L tank	3133627
	For the 6L tank	3133628
DISTRIBUTOR BLOCK		1525370
TANK	3 L	6770033
	6 L	6770006
PRESSURE GAUGE	0 -100 bar	0020564

* Flowrate is referred to 1500 rpm

ACCESSORIES		
ITEM	DESCRIPTION	PART NUMBER
PRESSURE SWITCH	Calibration pressure 3 Bar	3291028
	Calibration pressure 18 Bar	3291048
	Calibration pressure 30 Bar	3291022
PRESSURE SWITCH CAP		3042098
PRESSURE GAUGE	0 -16 bar	0020566
NON-RETURN VALVE		0092335