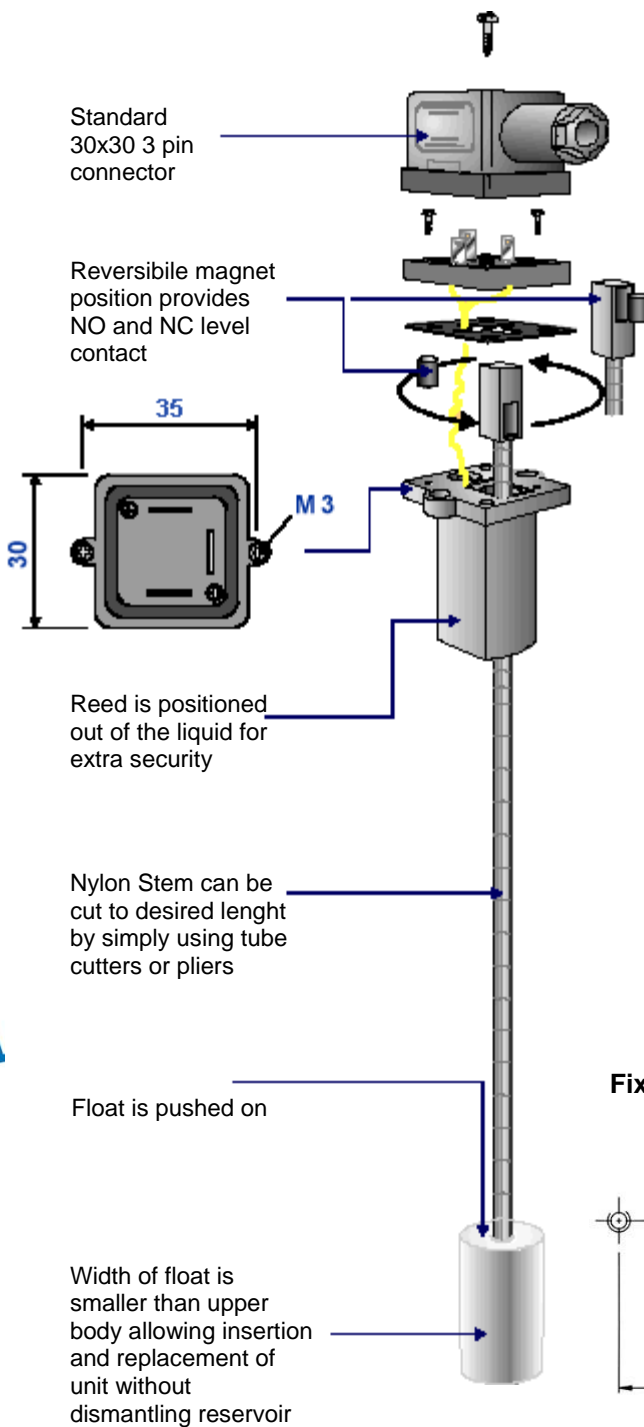


SENSOR

Fluid level switch Samba

1655582
1655583
1655590



Description:

The Samba is a low cost Level Switch specifically designed to reduce installation and replacement times.

Characteristic:

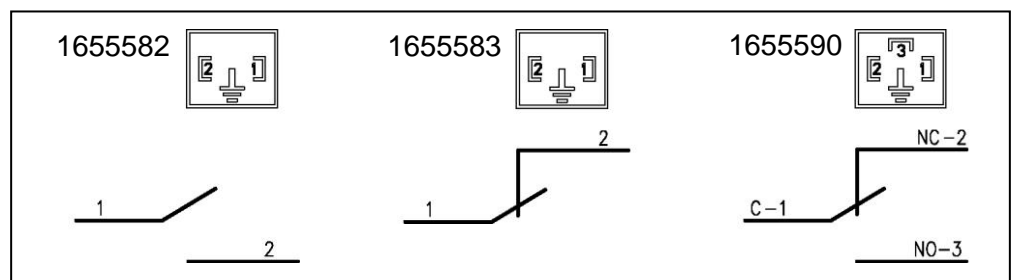
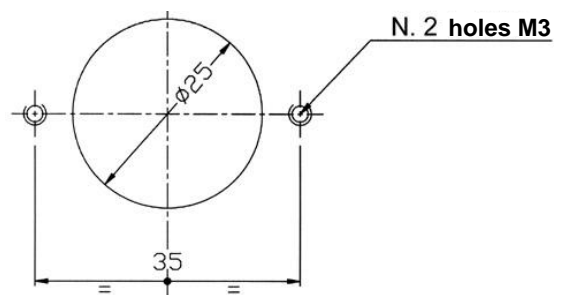
Temperature range: -10°C to + 80°C
Max. commutable power: 50 W
Max. current: 1 A
Max. Voltage: 220 Vac

Note:

Samba Level Switches are supplied complete with Float but without Top Connector which should be ordered separately.

Part. No.	Description
1655582	NO Switch + Float
1655583	NC Switch + Float
1655590	NO - NC Switch + Float
6770063	Separate Float
0039976	Top Connector

Fixing diagram



Web site:
<http://www.dropsa.com>

E-mail:
sales@dropsa.com

WK 03/06
C2030IE

ITALY
Dropsa SpA
t.(+39) 02-250791
f.(+39) 02-25079767

DROPSA CHINA
Dropsa Lubrication Systems
Tel: +86 (021) 67740275
Fax: +86 (021) 67740205

U.S.A.
Dropsa Corporation
t.(+1) 586-566-1540
f.(+1) 586-566-1541

U.K.
Dropsa (UK) Ltd
t.(+44) 01784-431177
f.(+44) 01784-438598

BRAZIL
Dropsa
t.(+55) 011-563-10007
f.(+55) 011-563-19408

GERMANY
Dropsa GmbH
t.(+49) 0211-394-011
f.(+49) 0211-394-013

AUSTRALIA
Dropsa Australia Ltd.
t.(+61) 02-9938-6644
f.(+61) 02-9938-6611

FRANCE
Dropsa Ame
t.(+33) 01-3993-0033
f.(+33) 01-3986-2636